

itä

Helsinginkuja

länsi



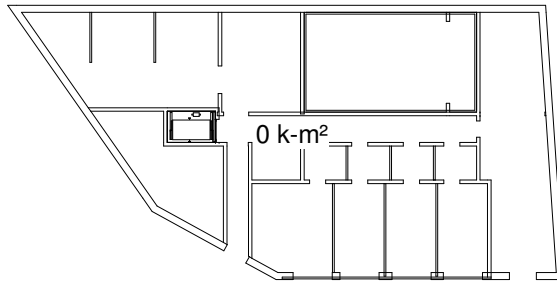
Kustaankadulle

uudisrakennus
Helsinginkuja 6

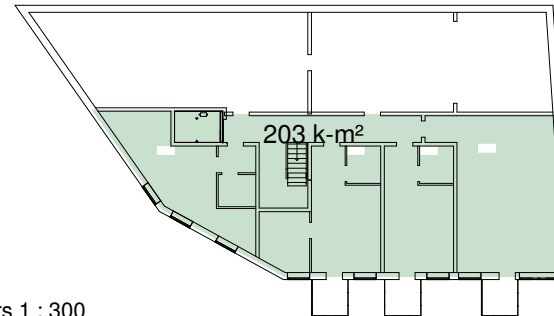
Fleminginkadulle



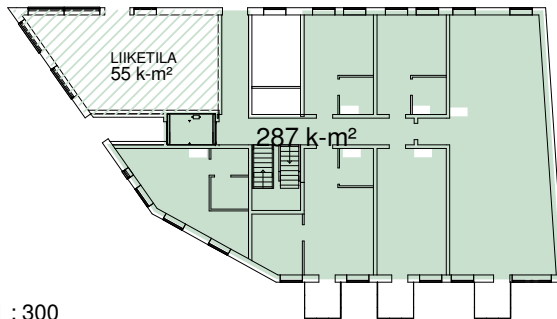




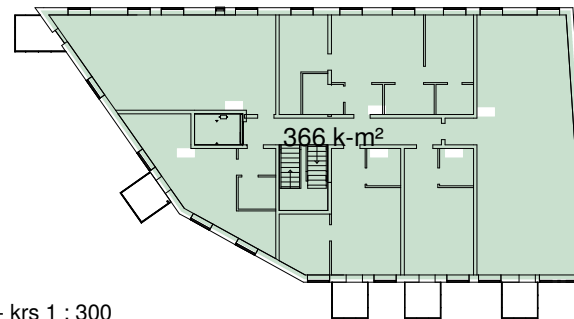
-02. krs 1 : 300



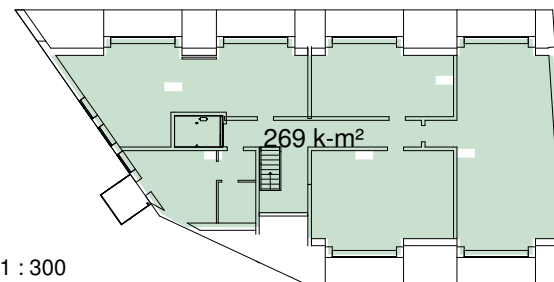
-01. krs 1 : 300



1. krs 1 : 300



2.-4.- krs 1 : 300



5. krs 1 : 300

Laajuus **1857 k-m²**.
Ulkoseinät 250 mm -säännöllä.
Kerrosaloissa ja
asuinhuoneistosummassa
hormivähennys 0,5m²/hsto.

Lisäksi liiketilaa 1. kerroksessa:
49 h-m² / **55 k-m²**.

HUM²		
AS. TYYPPI	LKM	ALA

1H+KT	13	
2H+KT	9	
3H+KK	7	
4H+KK	4	
YHT	33	1491 m²

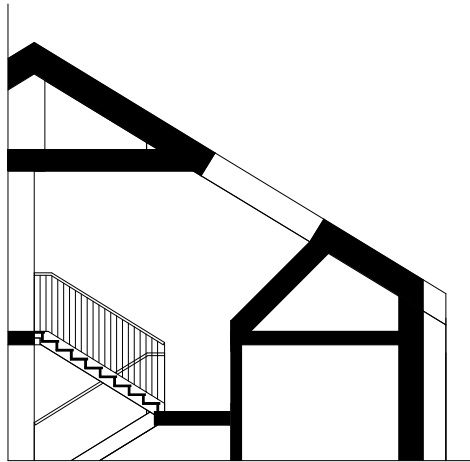
APUTILAT	
APUTILA	ALA

62 PP	49.0 m²
AUTOTALLIT	88.5 m²
IRT.VAR. 19 kpl	75.0 m²
IRT.VAR. (VSS)	47.5 m²
JÄTE	24.0 m²
KUIVAUS	0.0 m²
LVV	11.0 m²
PESULA + KUIVAUS	25.5 m²
SAUNAOSASTO	39.5 m²
SIIV	4.0 m²
TALOV.	6.0 m²
TEKN. TILA	21.0 m²
UVV	25.0 m²
YHT	416.0 m²



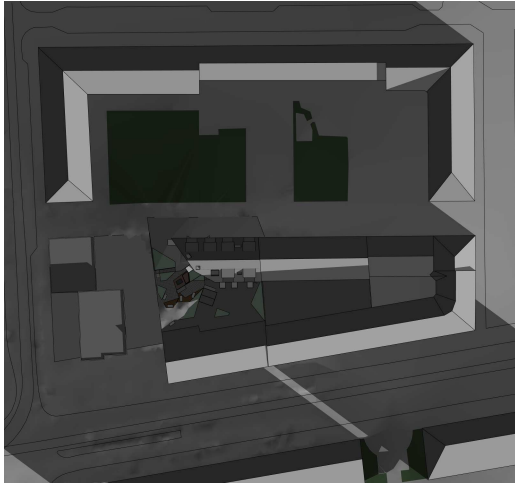




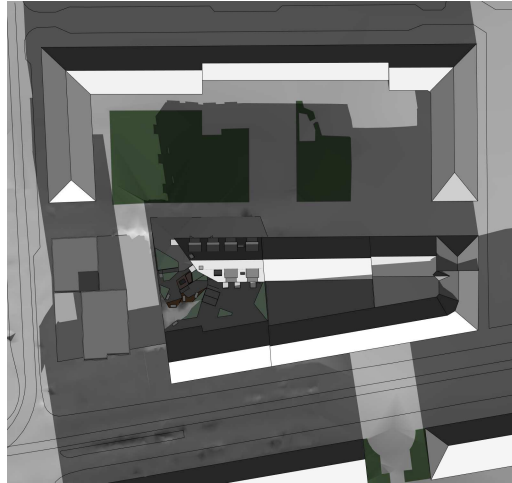


1. maaliskuuta

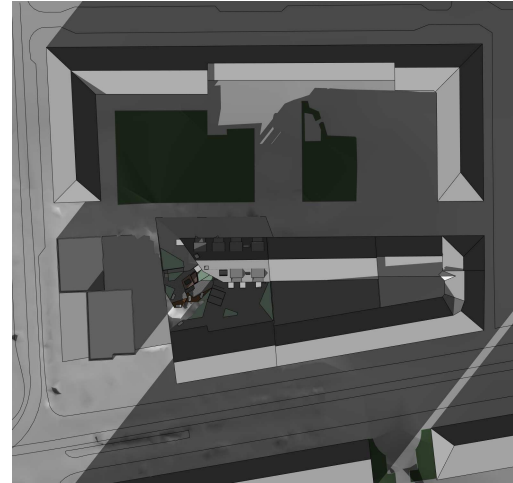
klo 09



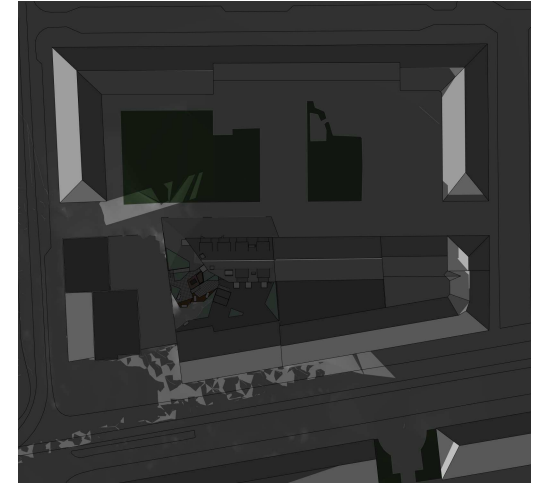
klo 12



klo 15

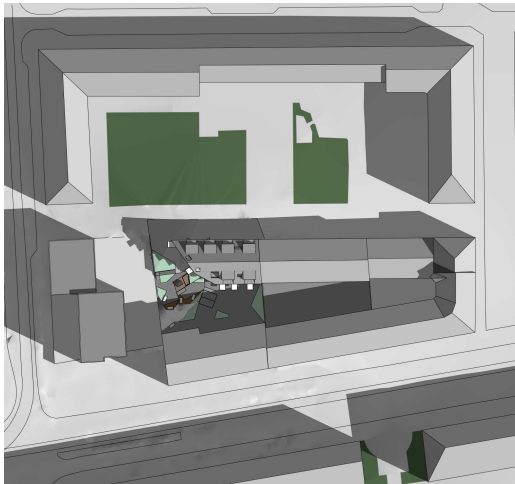


klo 18

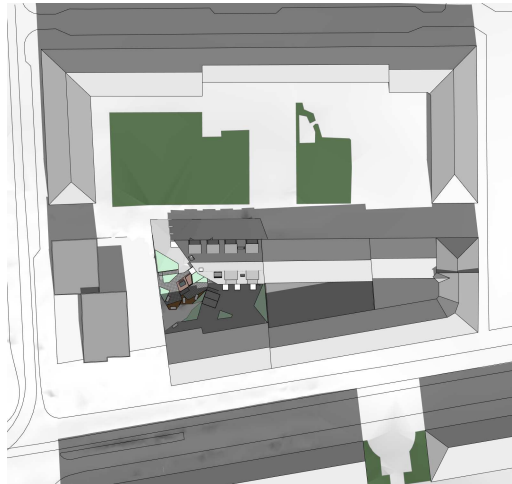


1. kesäkuuta

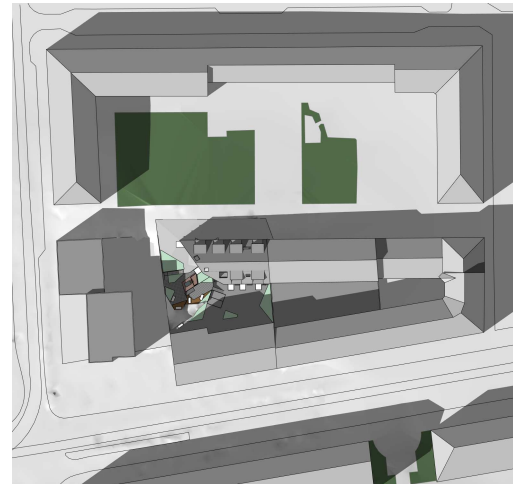
klo 09



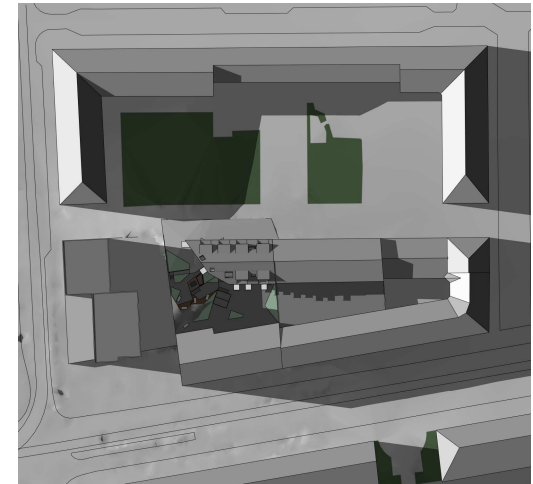
klo 12



klo 15

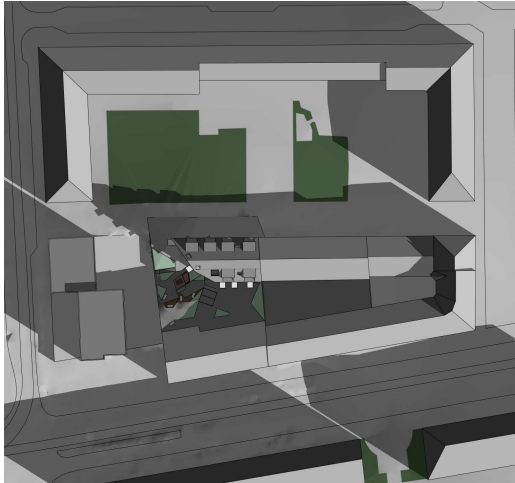


klo 18

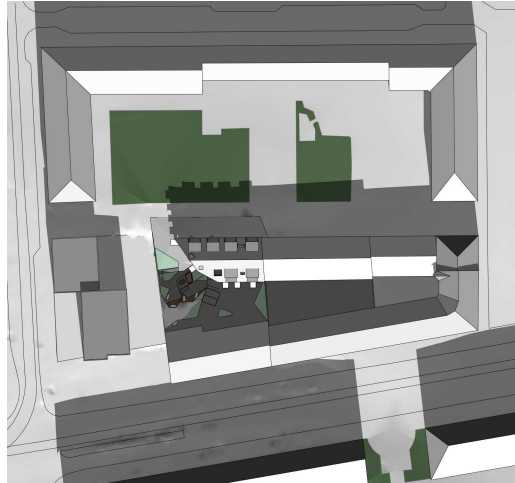


1. syyskuuta

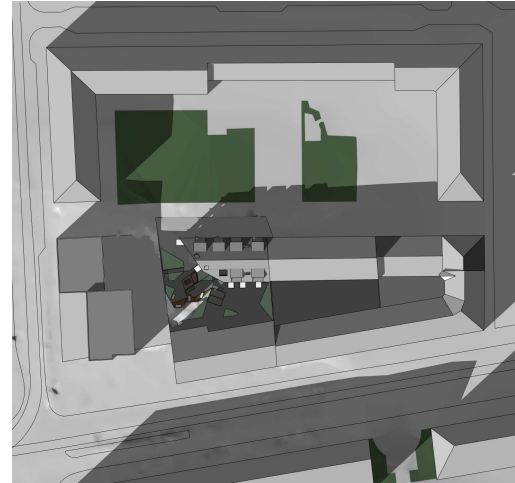
klo 09



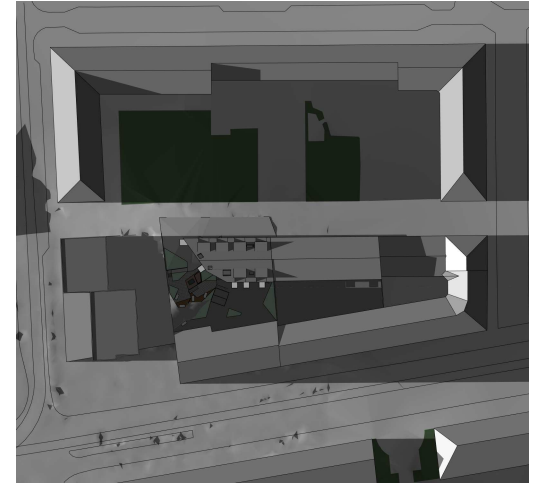
klo 12



klo 15

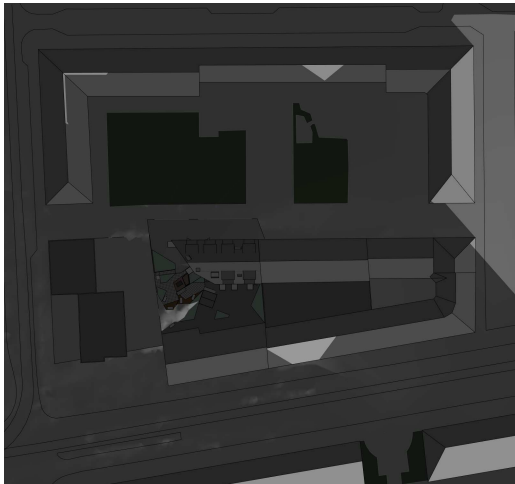


klo 18

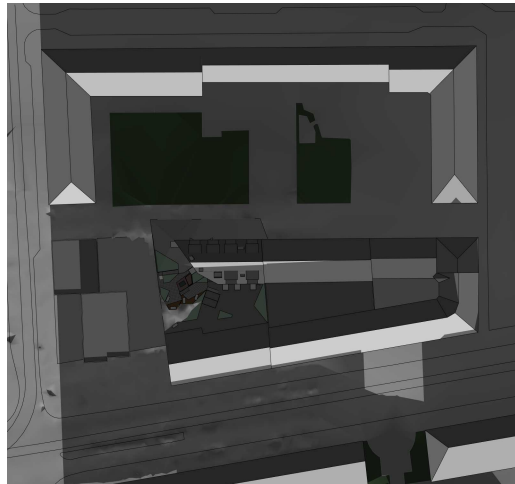


1. joulukuuta

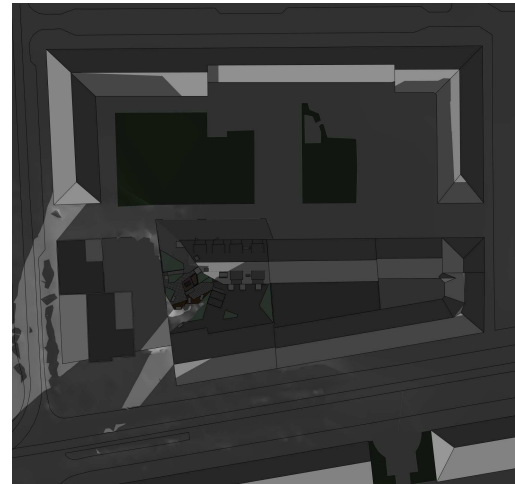
klo 09



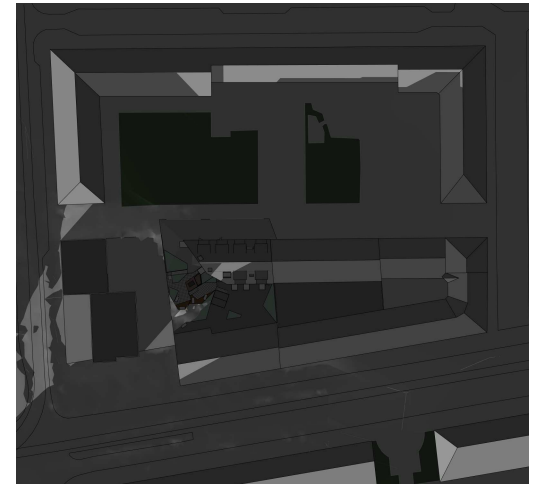
klo 12

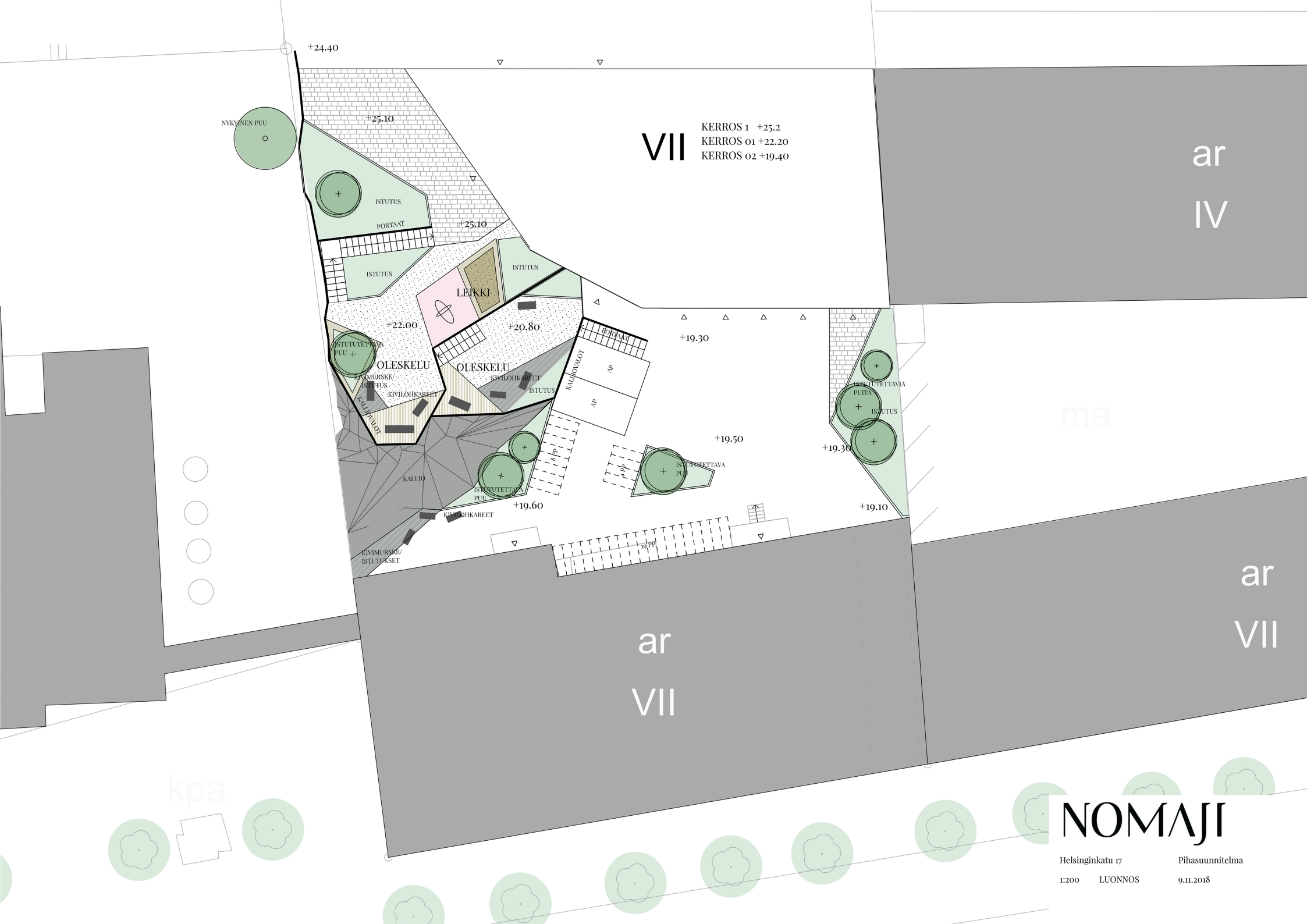


klo 15



klo 18





VII

KERROS 1 +25.2
 KERROS 01 +22.20
 KERROS 02 +19.40

ar
 IV

ma

ar
 VII

ar
 VII

kpa

NOMAJI

Helsinginkatu 17
 1200 LUONNOS
 Pihasuunnitelma
 9.11.2018