

38210

418-2-256

38K

Tullivuorentie

38P60

38P60

38K

418-7-444

Kellaritie

Vanhanradanraitti

38081

38230

MALMI 38

Tasokoordinaatisto / Plankoordinatsystem:  
 ETRS-GK25  
 Korkeusjärjestelmä / Höjdsystem:  
 N2000

1

1

2

9

3

4

5

8

14.6

14.8

14.2

15.2

14.7

20

14.4

14.4

22

68.88

1516

14.8

14.7

5.0

14.4

28

65.95

26.32

15.0

15.1

38P60

14.9

26

14.3

14.5

1343

38K

418-7-444

14.5

13.6

24

14.4

25501550

6681900

14.9

14.6

13.7

18.4

18.4

38081

14.8

14.4

4

ar II

17.9

at

1024

15.7

15.9

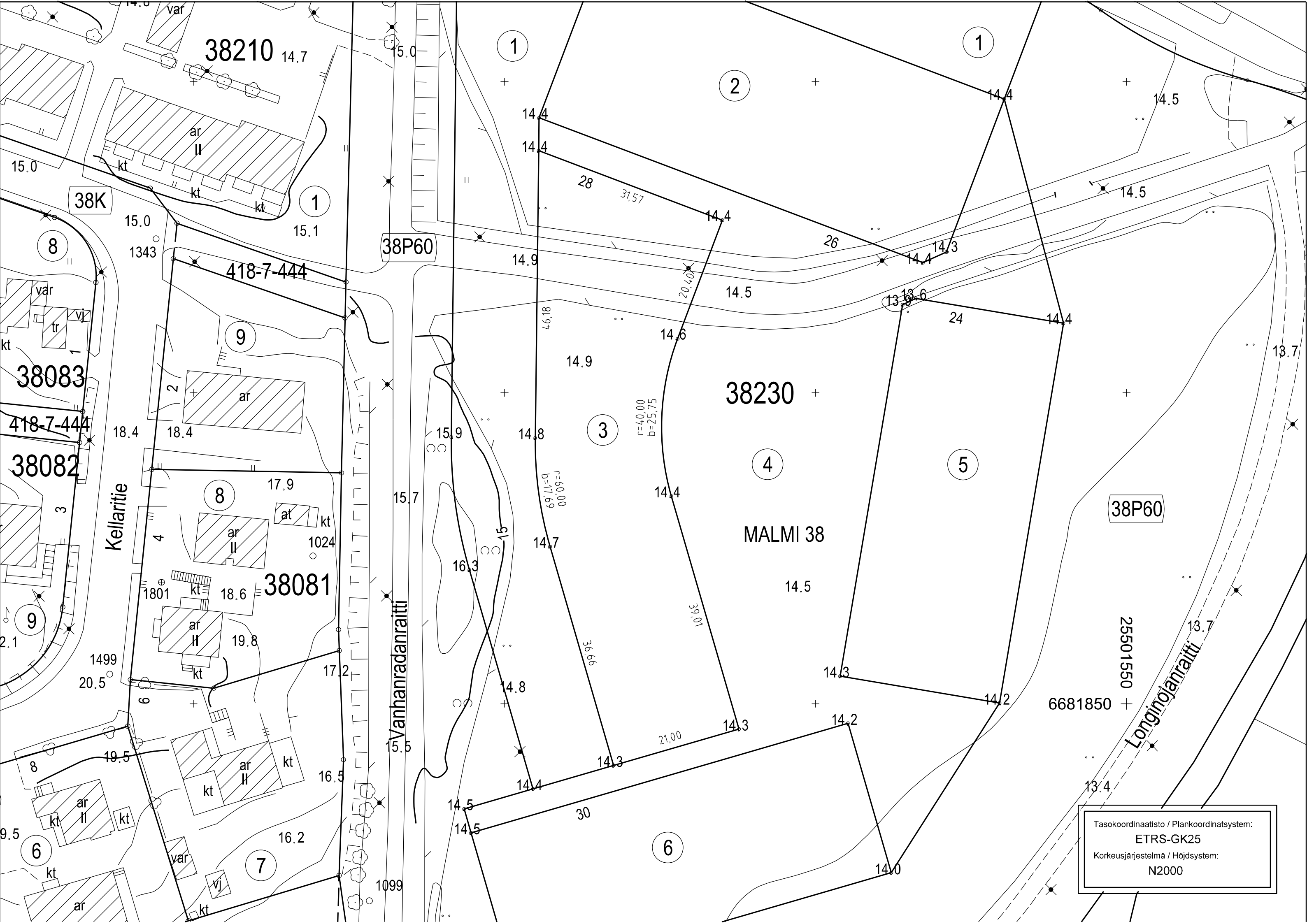
14.8

14.7

15







38210 14.7

38K

38P60

38083

38082

38081

38230

MALMI 38

38P60

25501550

6681850

Tasokoordinaatisto / Plankoordinatsystem:  
**ETRS-GK25**  
 Korkeusjärjestelmä / Höjdsystem:  
**N2000**

Kellaritie

Vanhanradanraitti

Longinojanraitti

418-7-444  
 418-7-444  
 418-7-444

418-7-444

$r=40,00$   
 $b=25,75$

$r=60,00$   
 $b=17,69$

28 31,57

39,01

36,69

46,18

20,40

13,13-6

15.0 1343

1499 20.5

9.5

15.0 15.1

18.4 18.4

17.9 1024

18.6 1801

17.2

19.5

16.2

14.9

15.7

15.5

1099

1

2

1

3

4

5

8

9

8

9

6

7

6

14.5

14.5

14.8

14.8

14.4

14.4

14.5

14.5

14.8

14.7

14.8

14.8

14.4

14.4

14.5

14.5

14.8

14.7

14.8

14.8

14.4

14.4

14.5

14.5

14.8

14.7

14.8

14.8

14.4

14.4

14.5

14.5

14.8

14.7

14.8

14.8

14.4

14.4

14.5

14.5

14.8

14.7

14.8

14.8

14.4

14.4

14.5

14.5

14.8

14.7

14.8

14.8

14.4

14.4

14.5

14.5

14.8

14.7

14.8

14.8

14.4

14.4

14.5

14.5

14.8

14.7

14.8

14.8

14.4

14.4

14.5

14.5

14.8

14.7

14.8

14.8

14.4

14.4

14.5

14.5

14.8

14.7

14.8

14.8

14.4

14.4

14.5

14.5

14.8

14.7

14.8

14.8

14.4

14.4

14.5

14.5

14.8

14.7

14.8

14.8

14.4

14.4

14.5

14.5

14.8

14.7

14.8

14.8

14.4

14.4

14.5

14.5

14.8

14.7

14.8

14.8

14.4

14.4

14.5

14.5

14.8

14.7

14.8

14.8

14.4

14.4

14.5

14.5

14.8

14.7

14.8

14.8

14.4

14.4

14.5

14.5

14.8

14.7

14.8

14.8

14.4

14.4

14.5

14.5

14.8

14.7

14.8

14.8

14.4

14.4

14.5

14.5

14.8

14.7

14.8

14.8

14.4

14.4

14.5

14.5

14.8

14.7

14.8

14.8

14.4

14.4

14.5

14.5

14.8

14.7

14.8

14.8

14.4

14.4

14.5

14.5

14.8

14.7

14.8

14.8

14.4

14.4

14.5

14.5

14.8

14.7

14.8

14.8

14.4

14.4

14.5

14.5

14.8

14.7

14.8

14.8

14.4

14.4

14.5

14.5

14.8

14.7

14.8

14.8

14.4

14.4

14.5

14.5

14.8

14.7

14.8

14.8

14.4

14.4

14.5

14.5

14.8

14.7

14.8

14.8

14.4

14.4

14.5

14.5

14.8

14.7

14.8

14.8

14.4

14.4

14.5

14.5

14.8

14.7

14.8

14.8

14.4

14.4

14.5

14.5

14.8

14.7

</