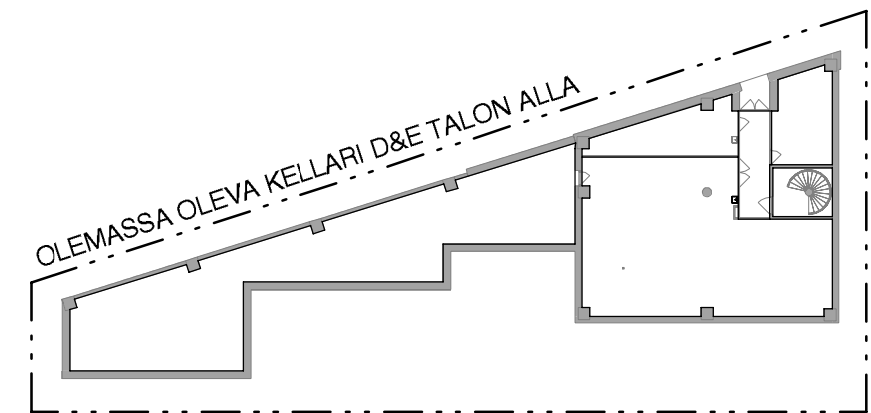
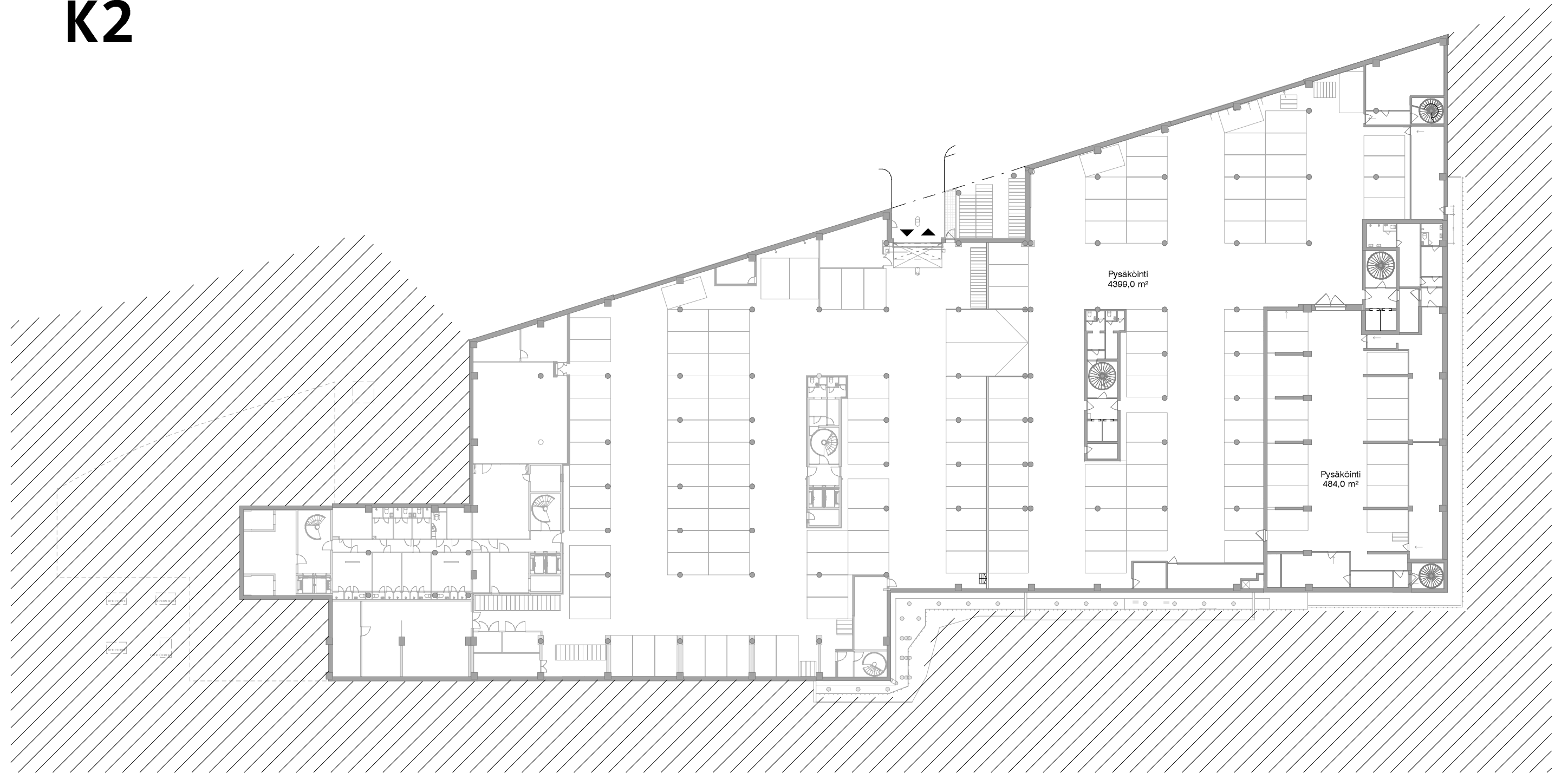


11920 Ilmalanrinne D&E talot  
Viitesuunnitelma

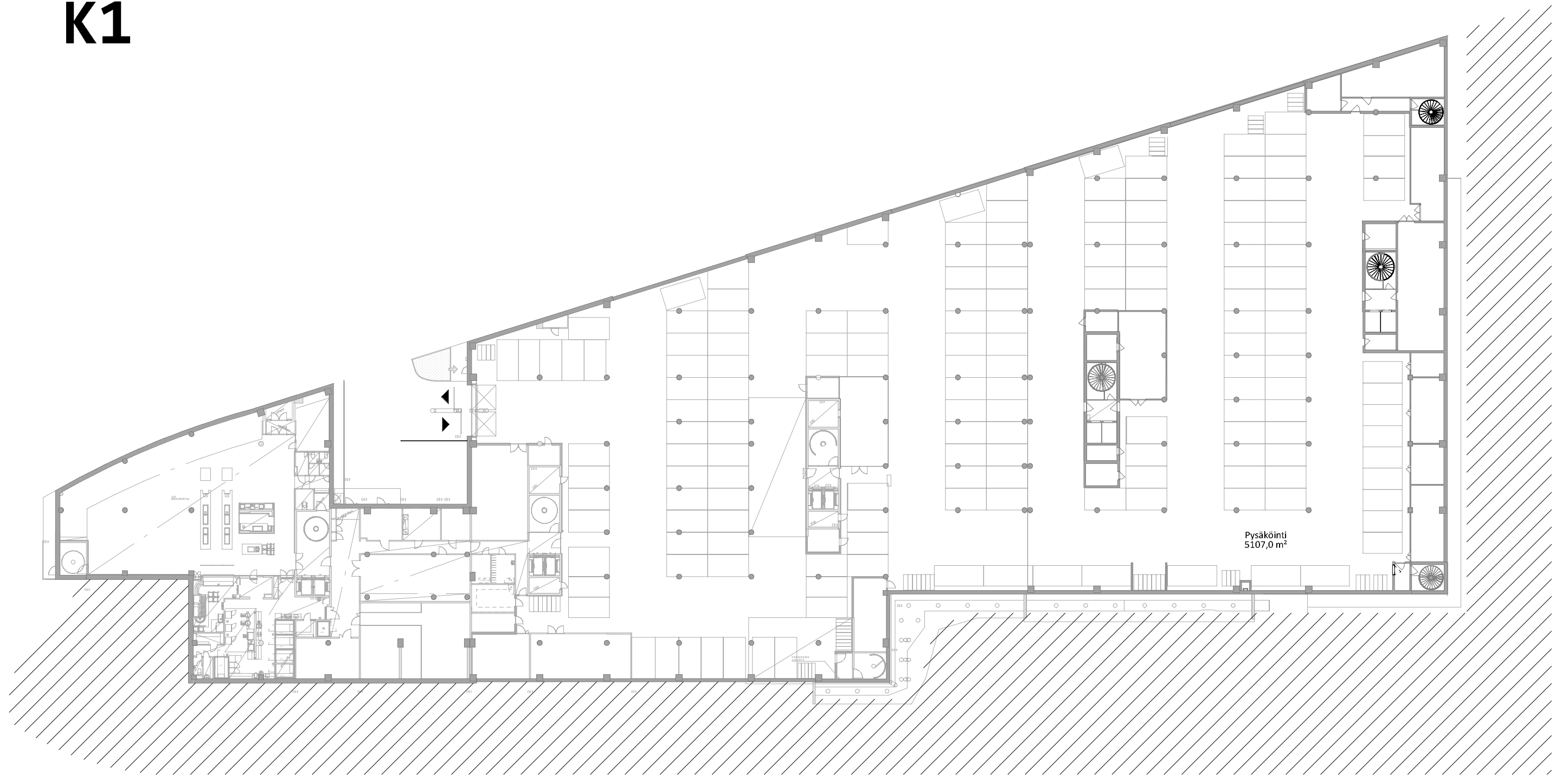
# K3



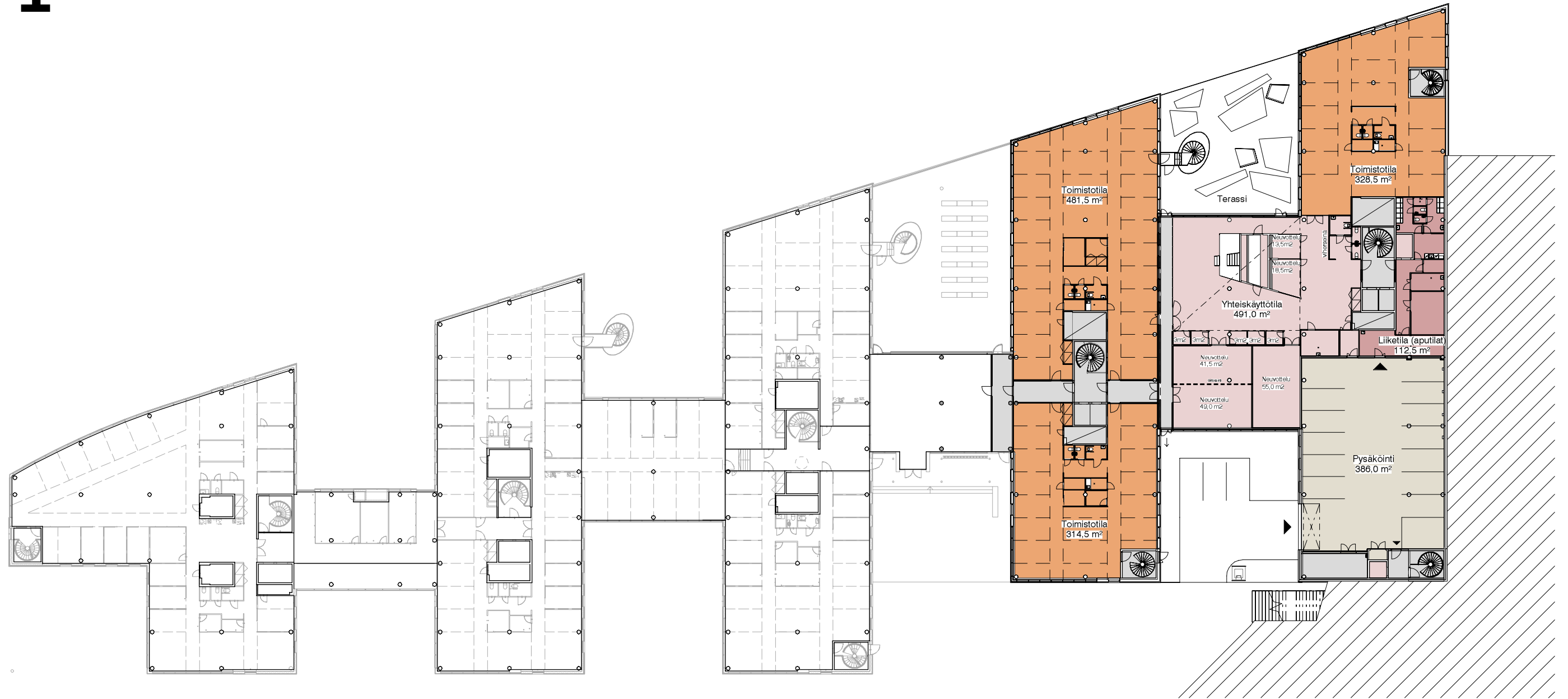
# K2



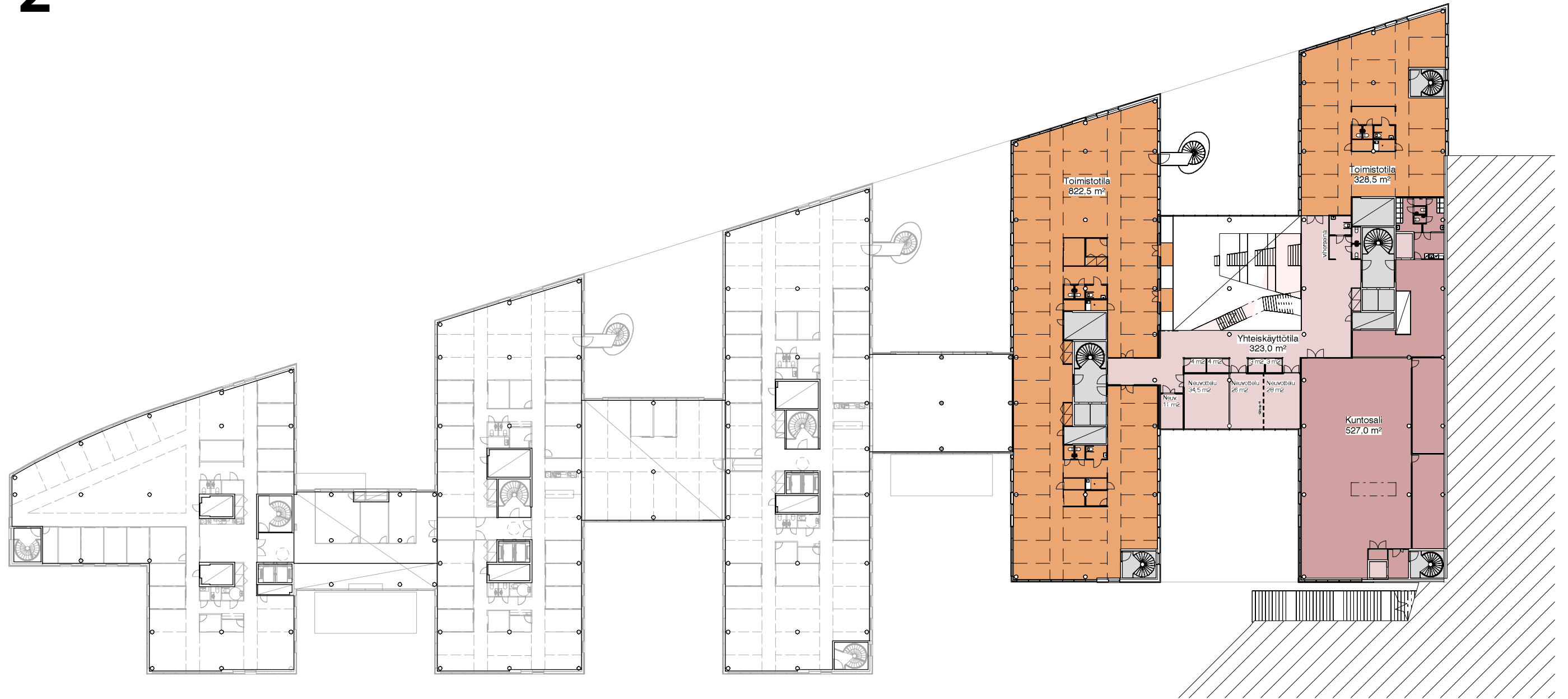
# K1



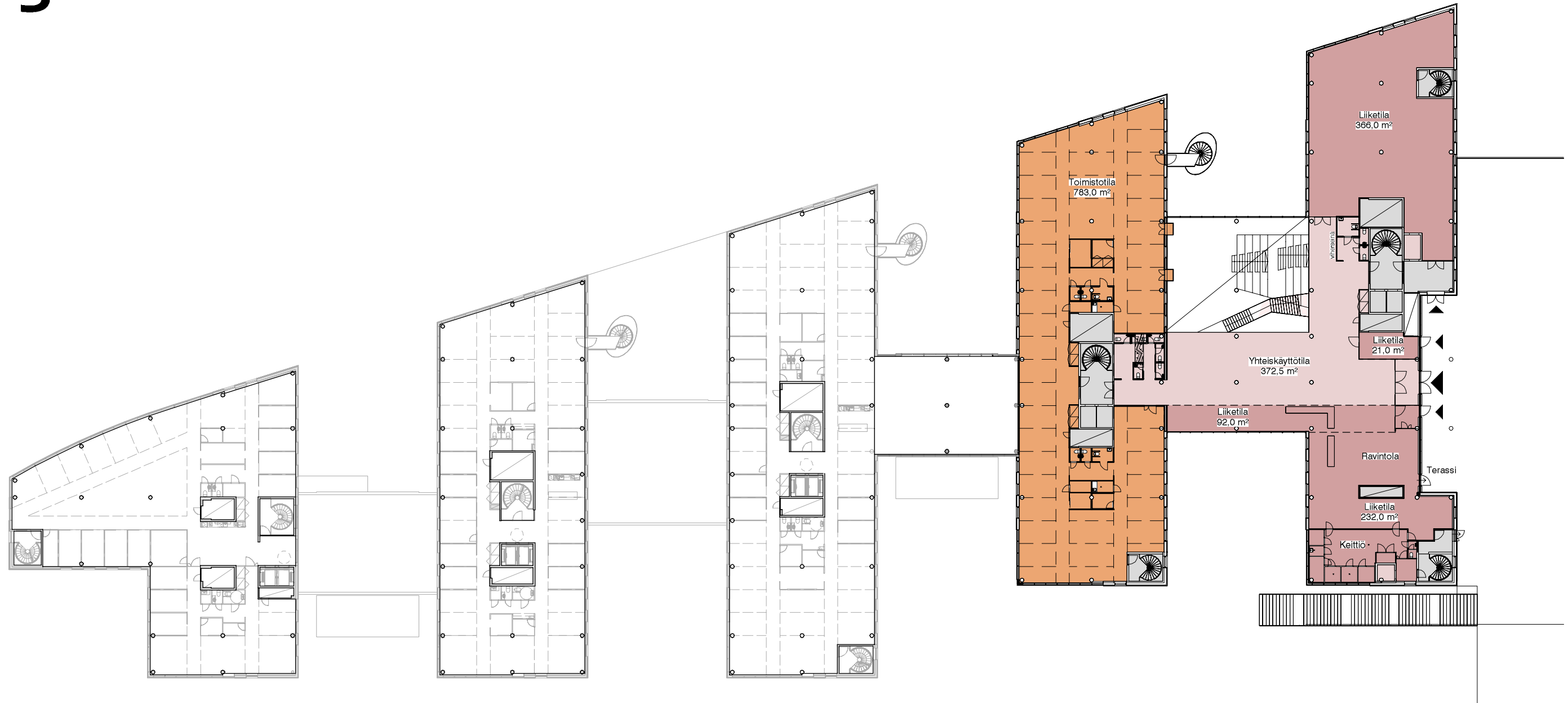
1



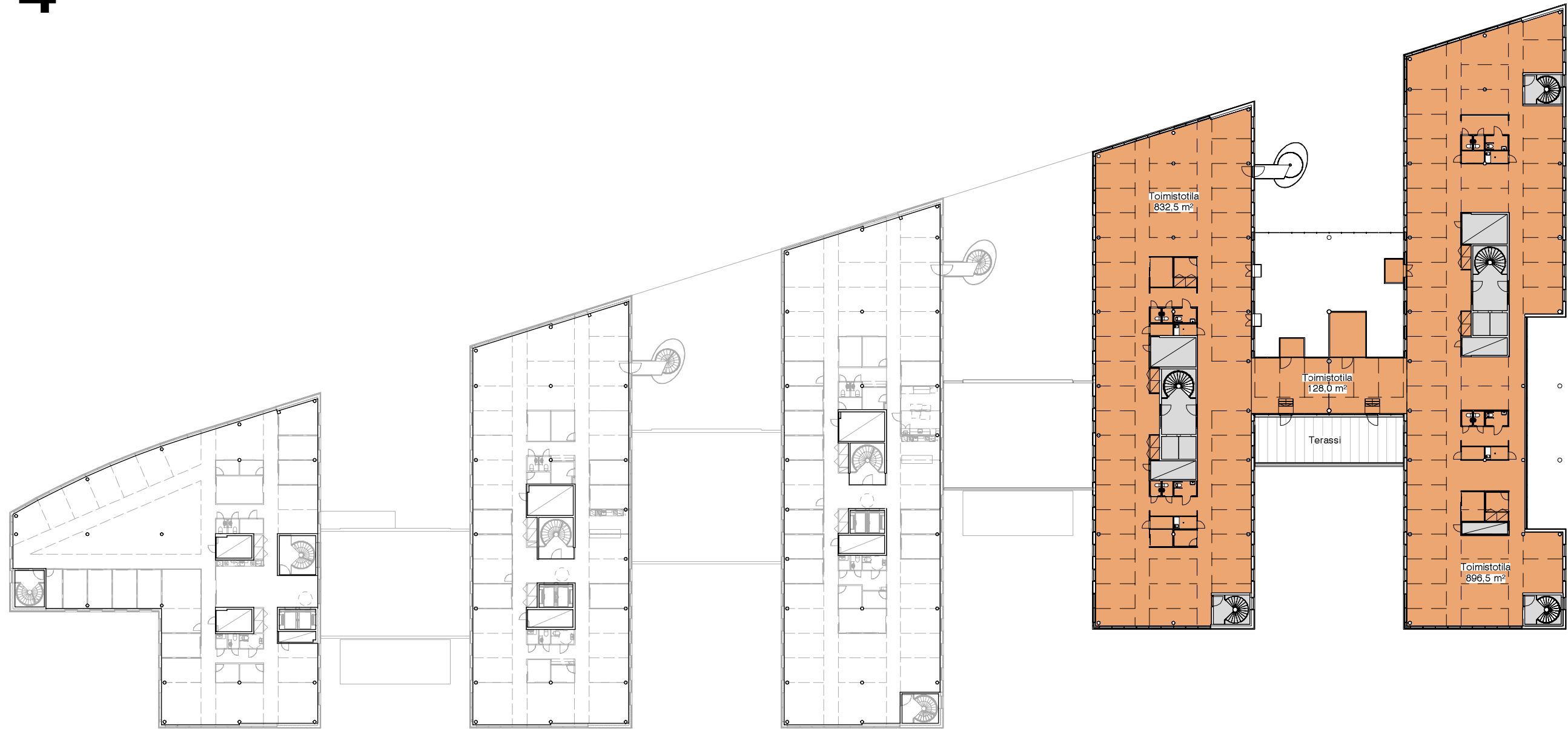
2



3

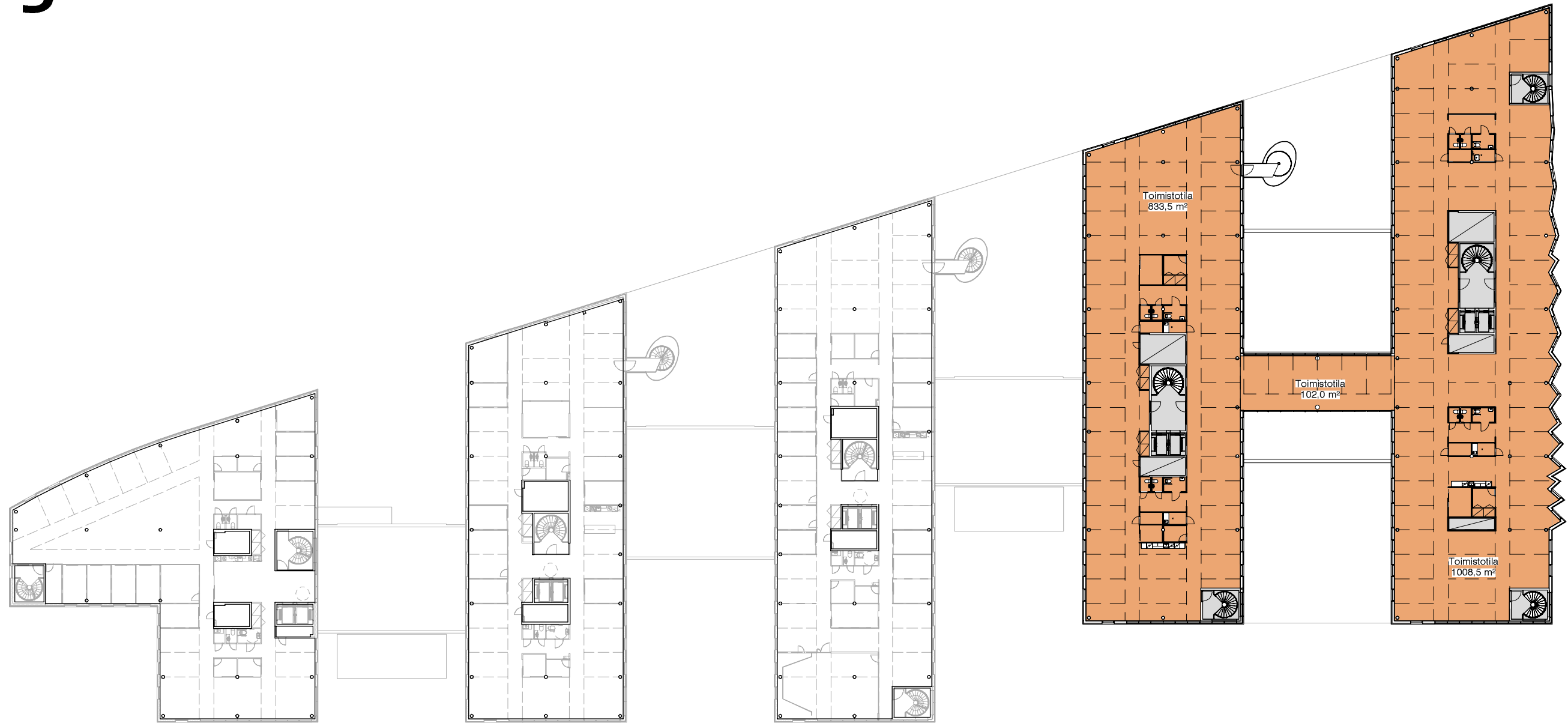


4

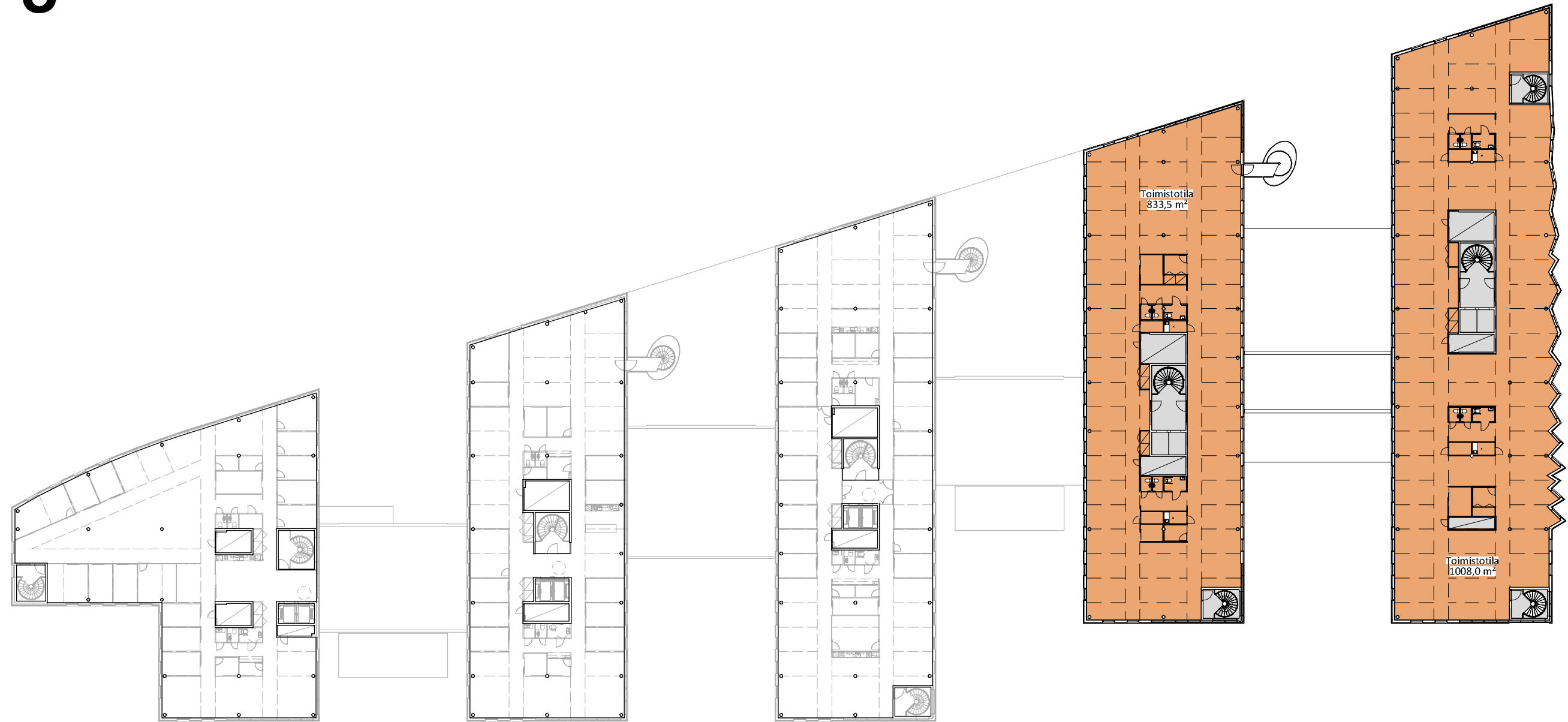




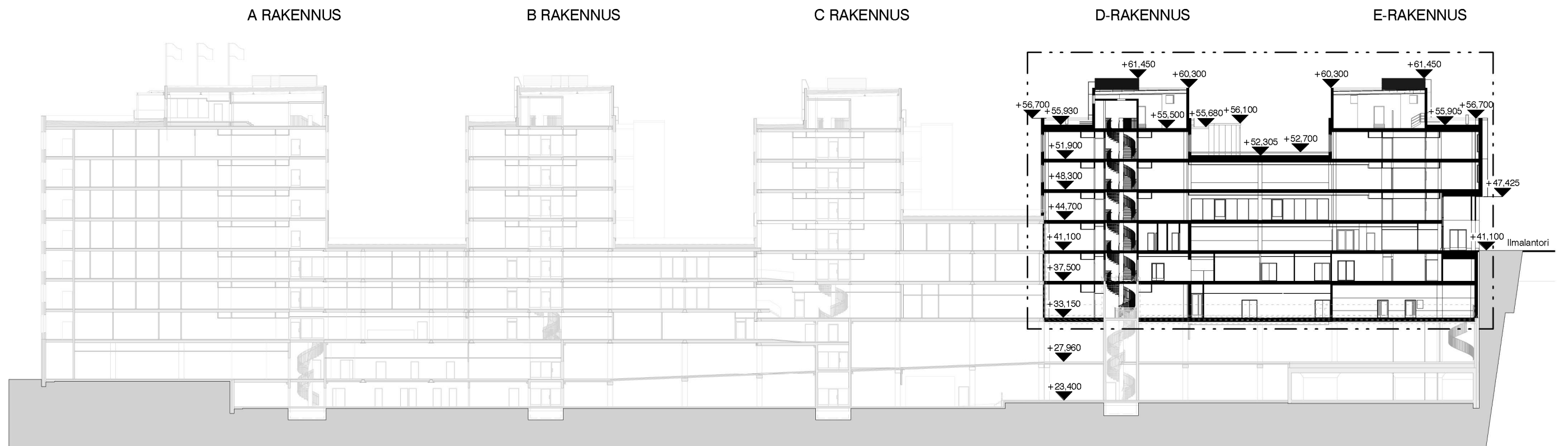
5

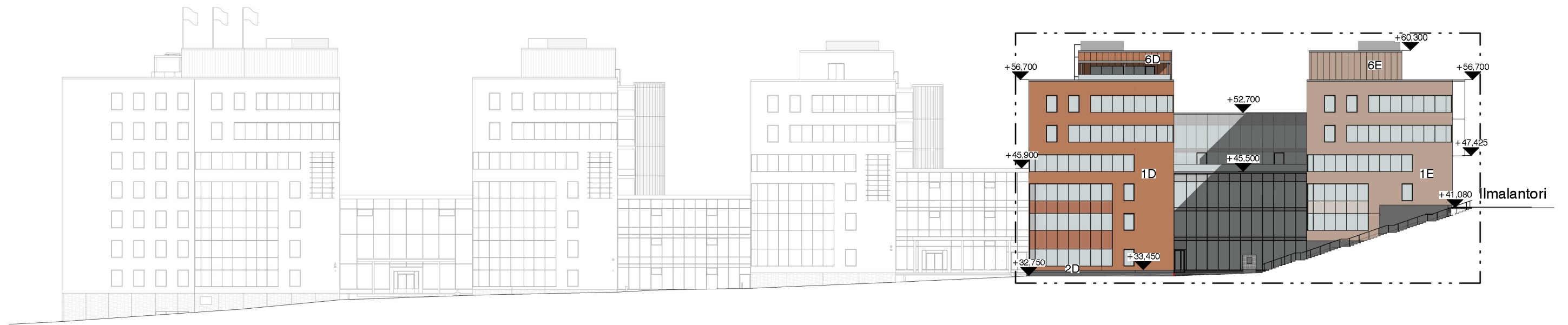


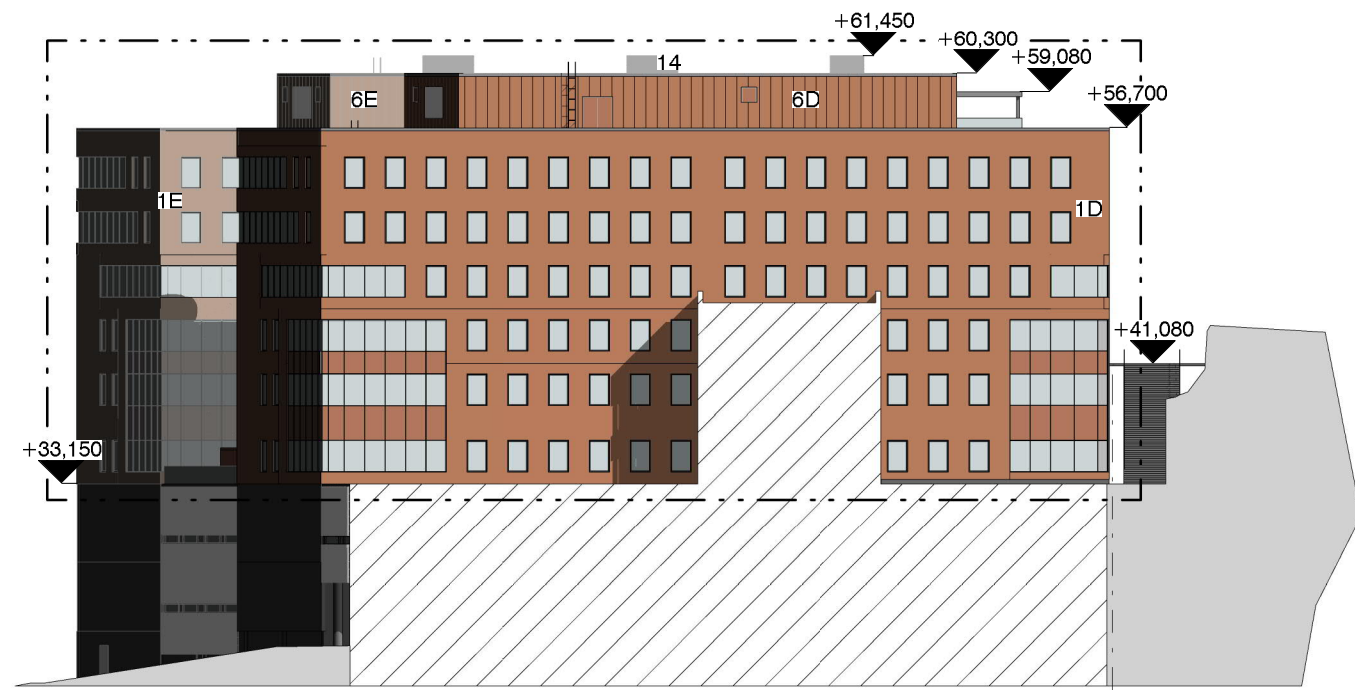
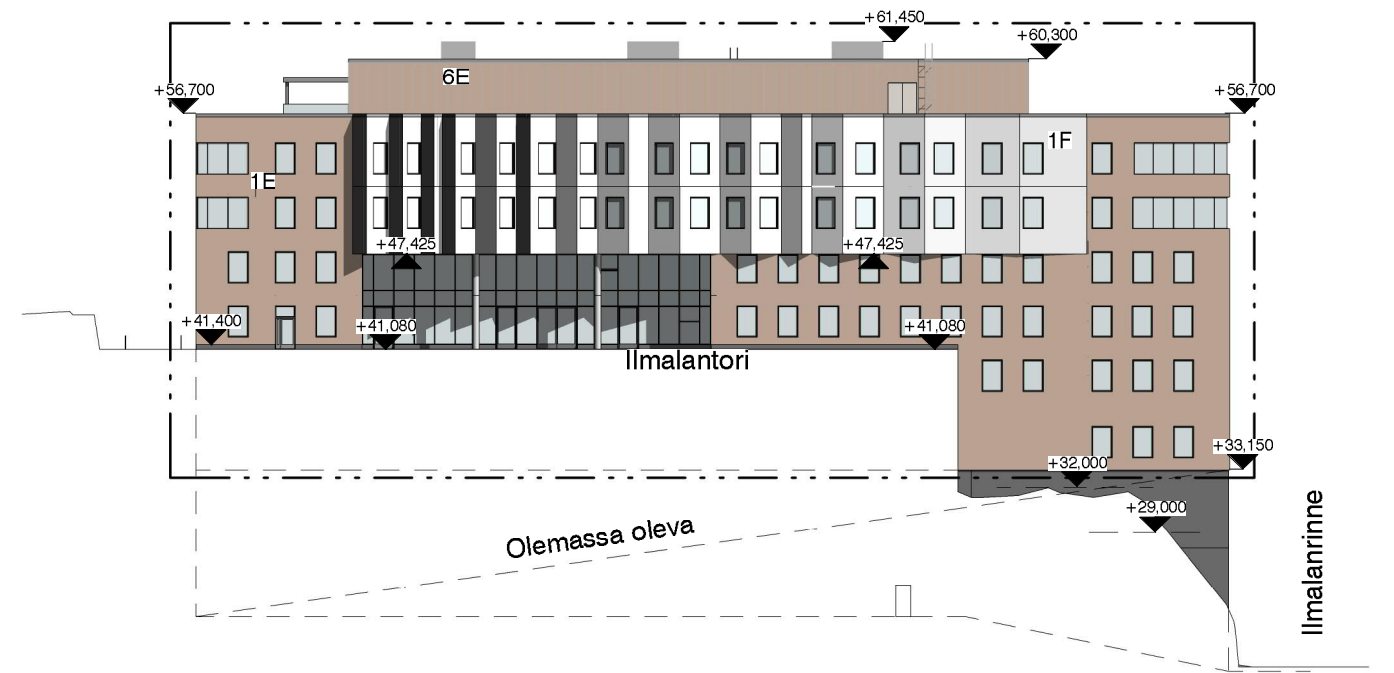
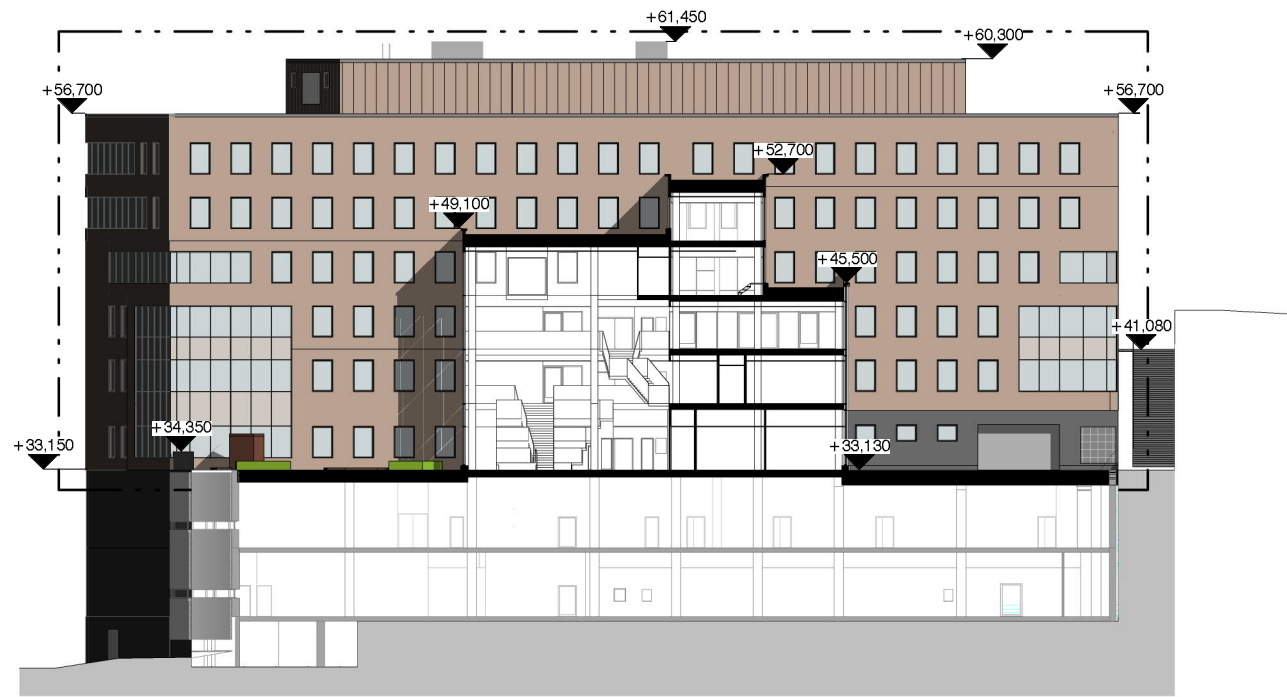
6











Pää julkisivumateriaalit ja -värit:

- 1A. Rappaus, sävy Tikkurila Symphony L478, tumma punaruskea, oleva
- 1B. Rappaus, sävy Tikkurila Symphony V415, punaruskea, oleva
- 1C. Rappaus, sävy Tikkurila Symphony L410, ruskeanpunainen, oleva
- 1D. Rappaus, sävy Tikkurila Symphony K407, vaalea terrakotta
- 1E. Rappaus, sävy Tikkurila Symphony J464, beige
- 1F. Rappaus rypytyksen kohdalla, sävyt liukuen Tikkurila Symphony G465 vaalea beige, G464 kerma, F468 valkoinen
- 2A. Graafinen betoni, sävytetty Tikkurila Symphony N417, tumma punaruskea, oleva
- 2B. Graafinen betoni, sävytetty Tikkurila Symphony M409, punaruskea, oleva
- 2C. Graafinen betoni, sävytetty Tikkurila Symphony S409, ruskeanpunainen, oleva
- 2D. Graafinen betoni, sävytetty Tikkurila Symphony K407, vaalea terrakotta, oleva
- 2E. Graafinen betoni, sävytetty Tikkurila Symphony H404, beige, oleva
3. Ikkuna, kirkas lasi, profiili RAL 7021 tummanharmaa
4. Järjestelmälasisseinä, kirkas lasi / julkisivulasi sävyt rappaussävyn mukaan
- 4A. RAL 030 40 20, D2 Design, tumma punaruskea, oleva
- 4B. RAL 040 40 30, D2 Design, punaruskea, oleva
- 4C. RAL 040 50 40, D2 Design, ruskeanpunainen, oleva
- 4D. Rappaussävyn mukaan, vaalea terrakotta
- 4E. Rappaussävyn mukaan, beige
8. Rei'itetty pelti, RR40 hopea
9. Pelti RR23 tummanharmaa
11. Betoni tummanharmaa
12. Betoni, luonnon sävy
14. Pelti + säle RAL 9006 hopea
15. Ritilä / säle, sävy RAL 7021 tummanharmaa, oleva





**parviainen**  
ARKKITEHDIT

ILMALANRINNE D&E TALOT  
GLL Real Estate Partners

5.2.2021





**parviainen**  
ARKKITEHDIT

ILMALANRINNE D&E TALOT  
GLL Real Estate Partners

5.2.2021



**parviainen**  
ARKKITEHDIT

ILMALANRINNE D&E TALOT  
GLL Real Estate Partners

5.2.2021







