

UBGIII RAKENNUSOIKEUS

1. KRS.	1720 m ²
2. KRS.	1555 m ²
3. KRS.	1570 m ²
4. KRS.	1570 m ²
5. KRS.	1570 m ²
6. KRS.	1570 m ²
7. KRS.	1570 m ²

YHT: 11125 m²

POLKUPYÖRÄPAIKAT LASKELMA 1PP/60kem²

TONTTI 22	
KERROS	LMK
ALEMPI TASO	10
YLEMPI TASO	22
	32

TONTILLA 22 KÄYTÖSSÄ 139 PP

RASITTEET

TONTTI 15	
ALEMPI TASO	68
YLEMPI TASO	52
PIHA TASO	22
	142

TONTTI 19	
PIHA TASO	6

TONTTI 20	
PIHA TASO	6

YHTEENSÄ: 145



UBGIII RAKENNUSOIKEUS

1. KRS.	1720 m ²
2. KRS.	1555 m ²
3. KRS.	1570 m ²
4. KRS.	1570 m ²
5. KRS.	1570 m ²
6. KRS.	1570 m ²
7. KRS.	1570 m ²

YHT: 11125 m²

POLKUPYÖRÄPAIKAT LASKELMA 1PP/80kem2

TONTTI 22	
KERROS	LMK
ALEMPI TASO	10
YLEMPI TASO	22
	32

TONTILLA 22 KÄYTÖSSÄ 139 PP

RASITTEET

TONTTI 15	
ALEMPI TASO	68
YLEMPI TASO	52
PIHA TASO	22
	142

TONTTI 19

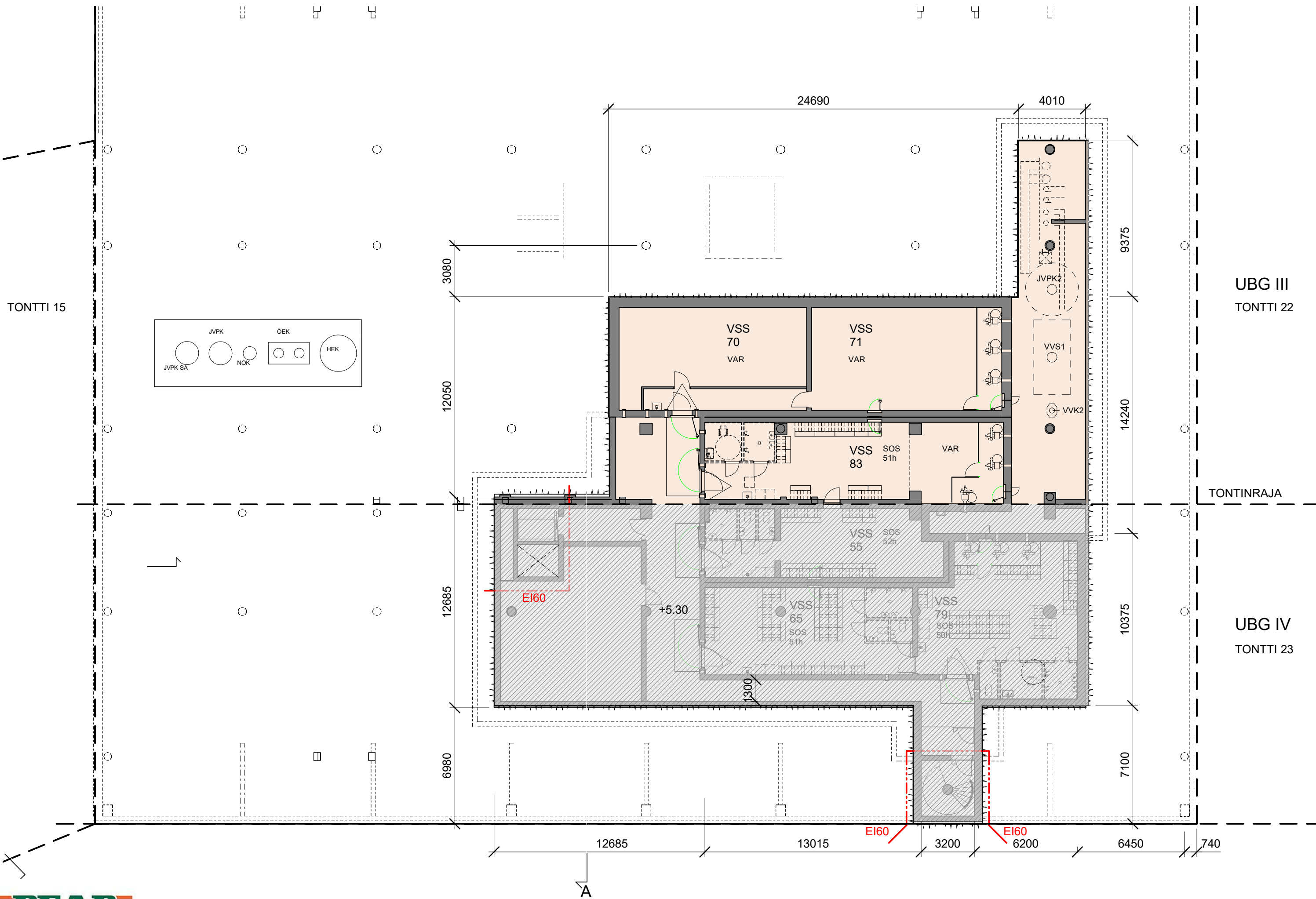
PIHA TASO	6
-----------	---

TONTTI 20

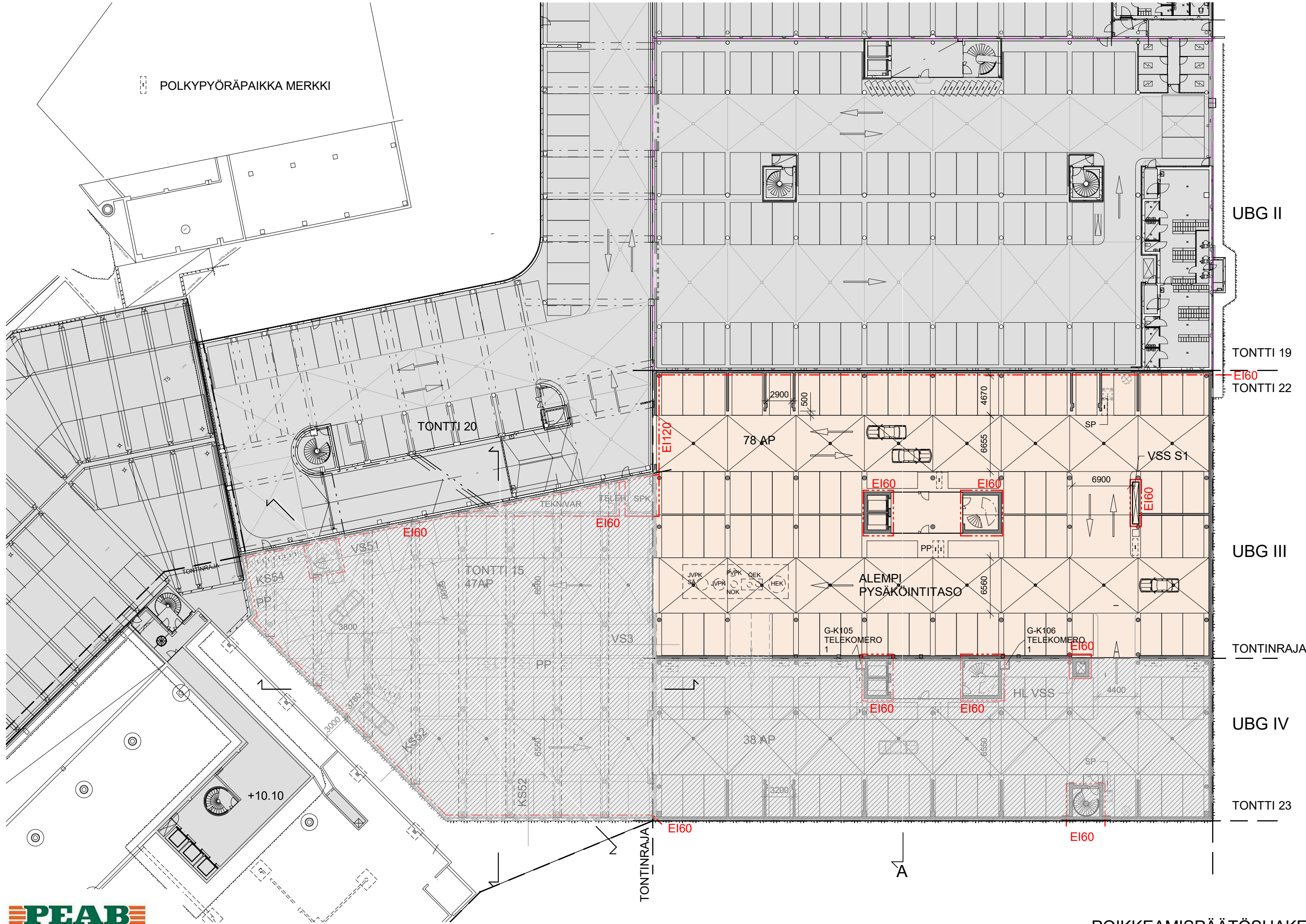
PIHA TASO	6
-----------	---

YHTEENSÄ: 145





POLKYPYÖRÄPAIKKA MERKKI



UBG II

TONTTI 19

E160
TONTTI 22

TONTTI 20

78 AP

VSS S1

E160

E160

E160

E160

UBG III

ALEMPI
PYSÄKÖINTITASO

TONTTI 15
47 AP

G-K105
TELEKOMERO
1

G-K106
TELEKOMERO
1

TONTINRAJA

UBG IV

38 AP

HL VSS

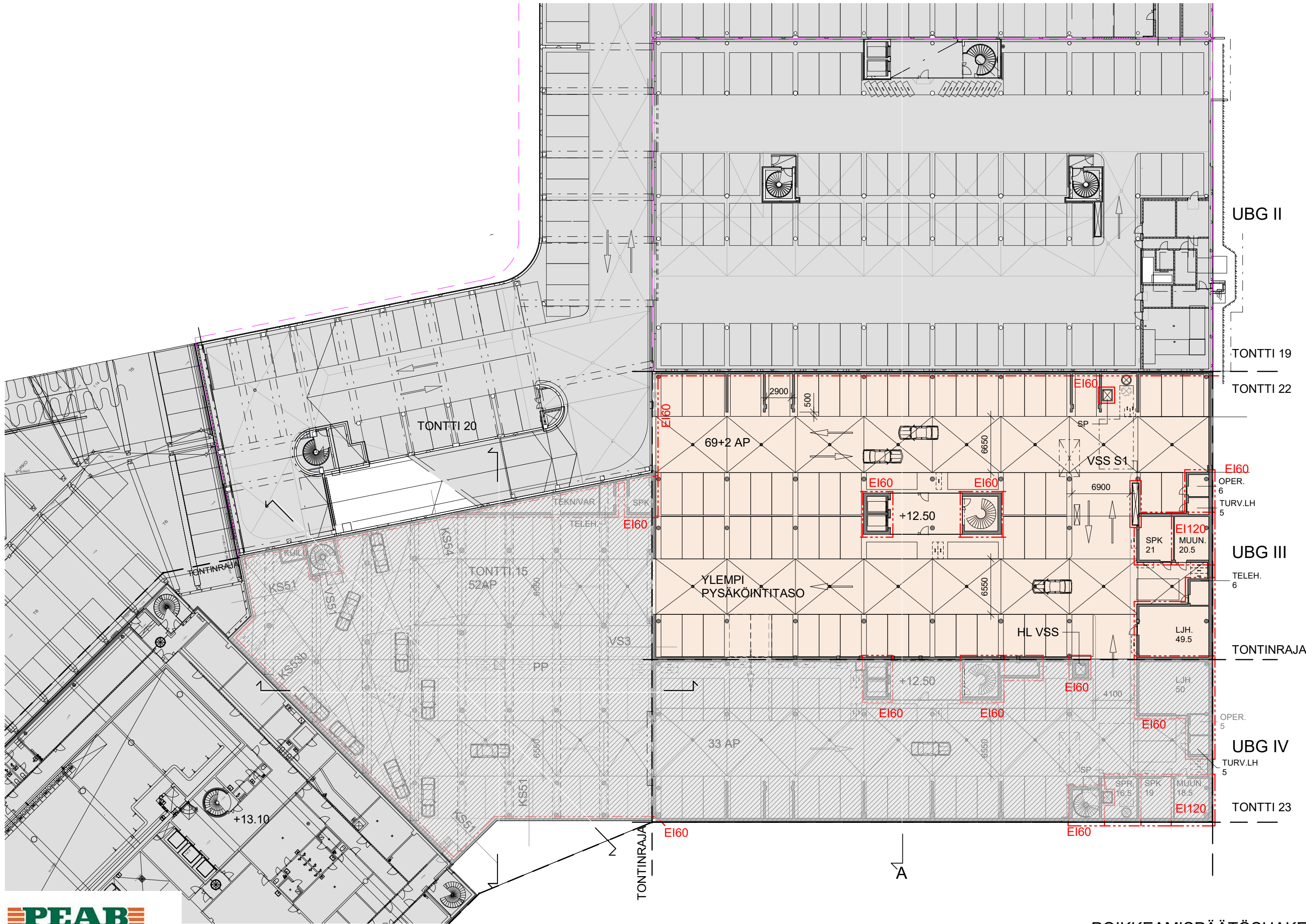
TONTTI 23

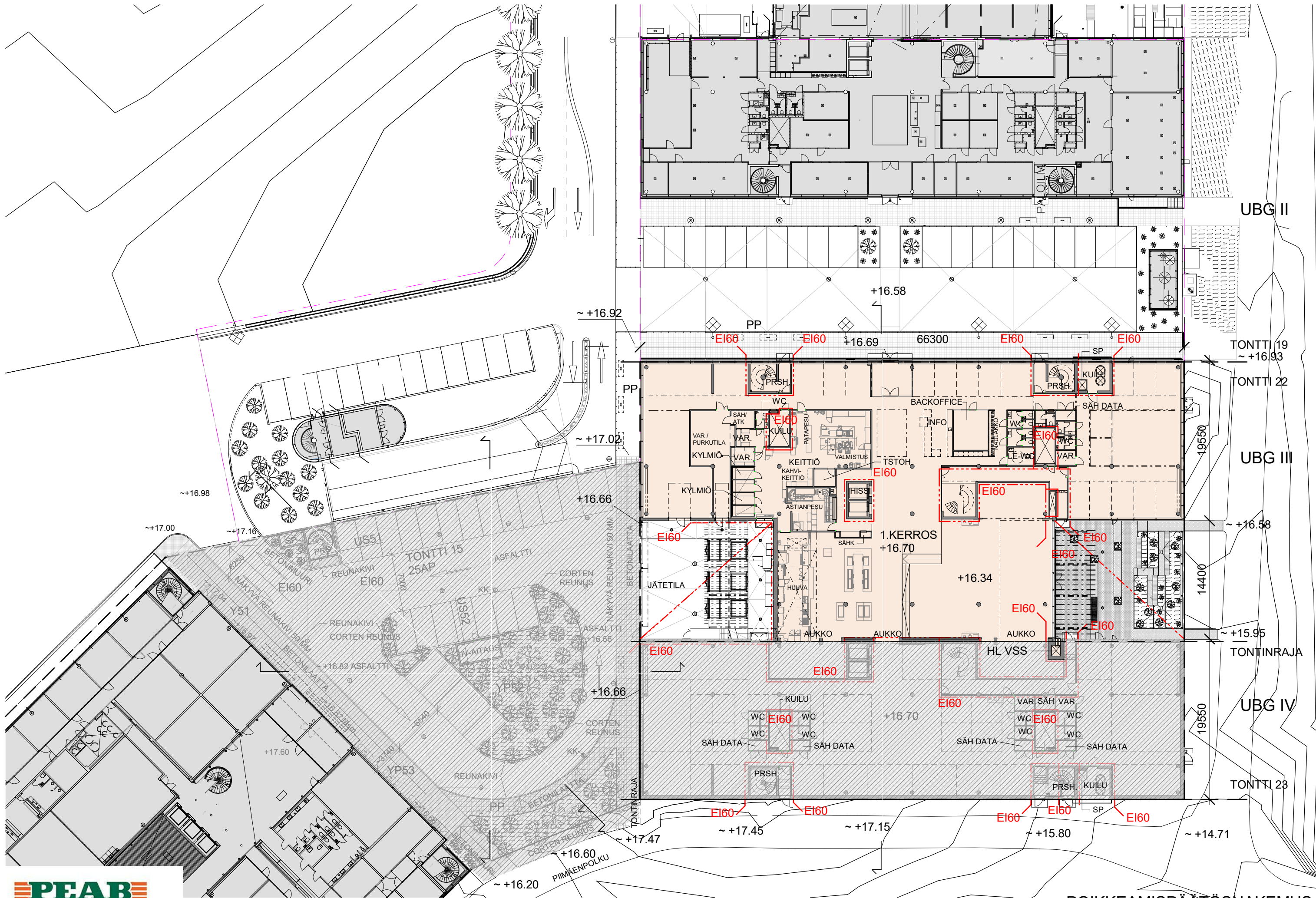
TONTINRAJA

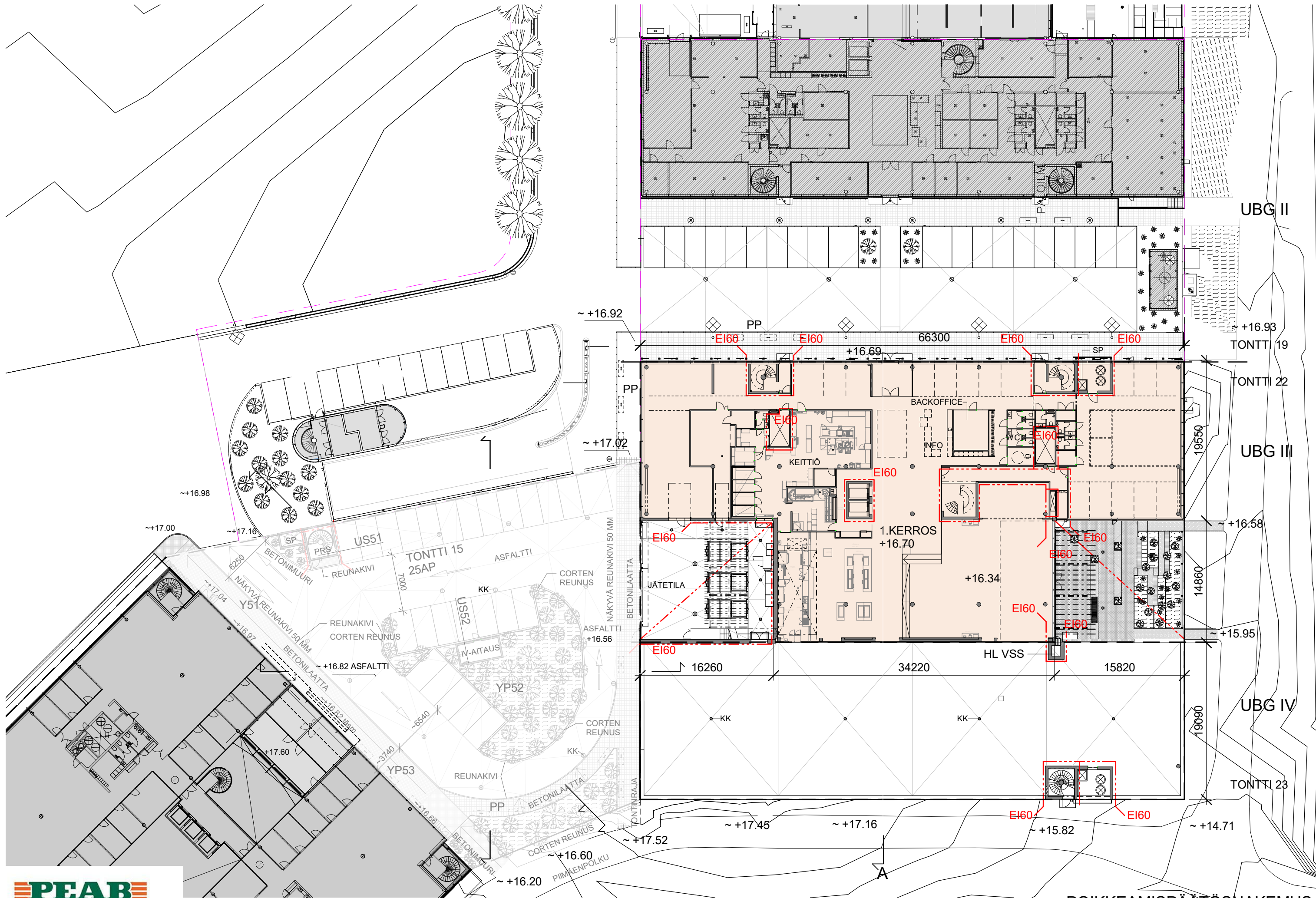
E160

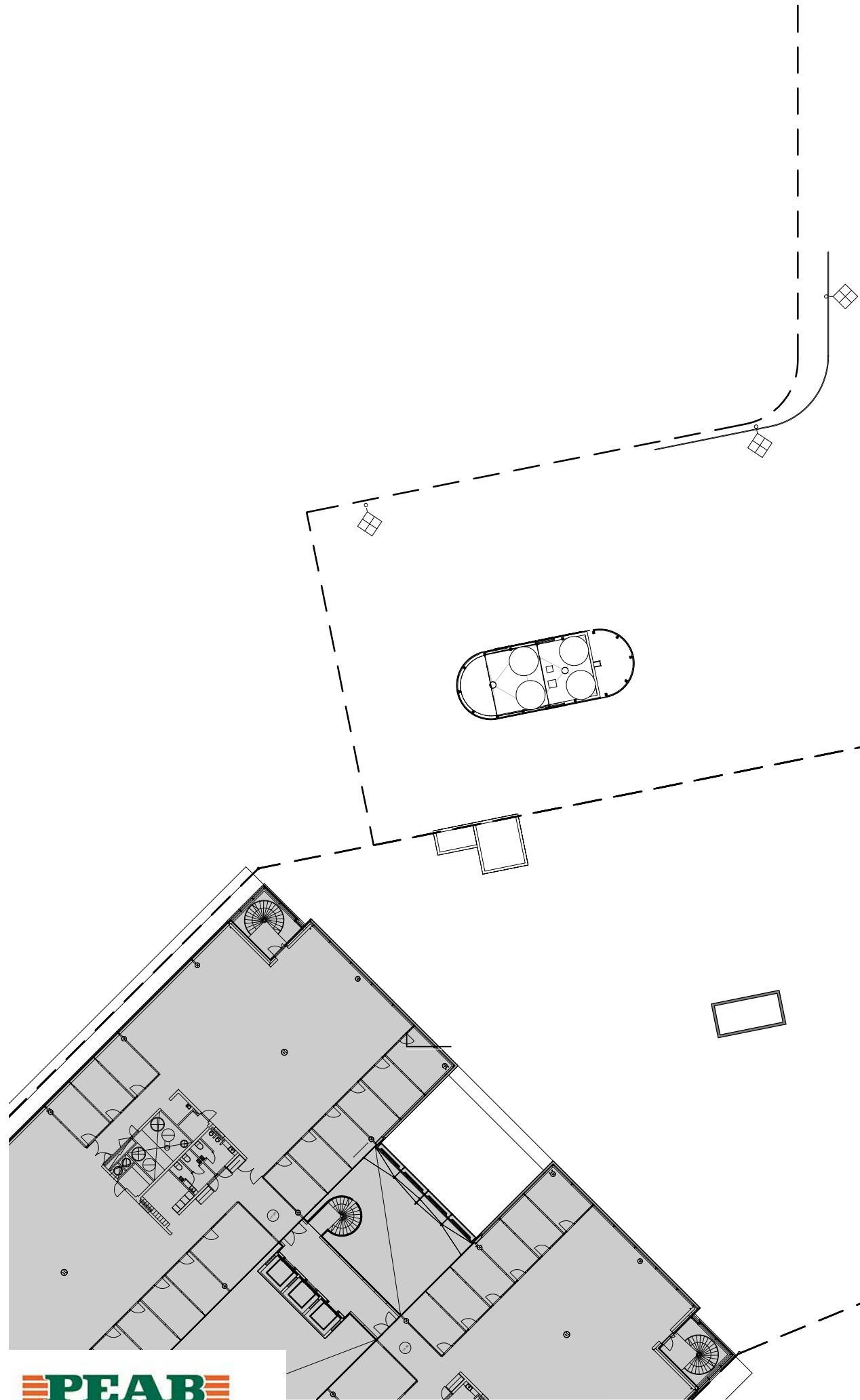
E160

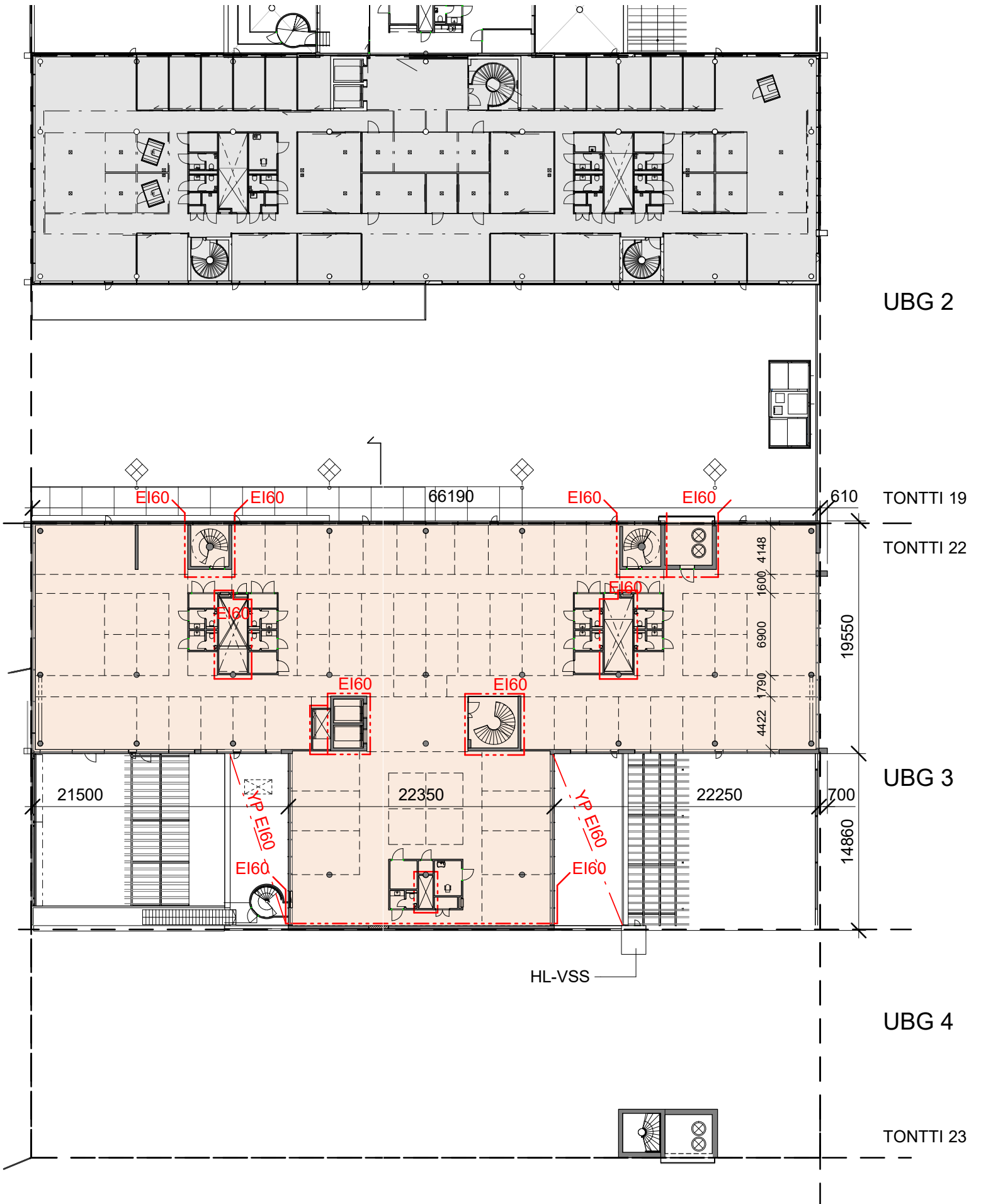
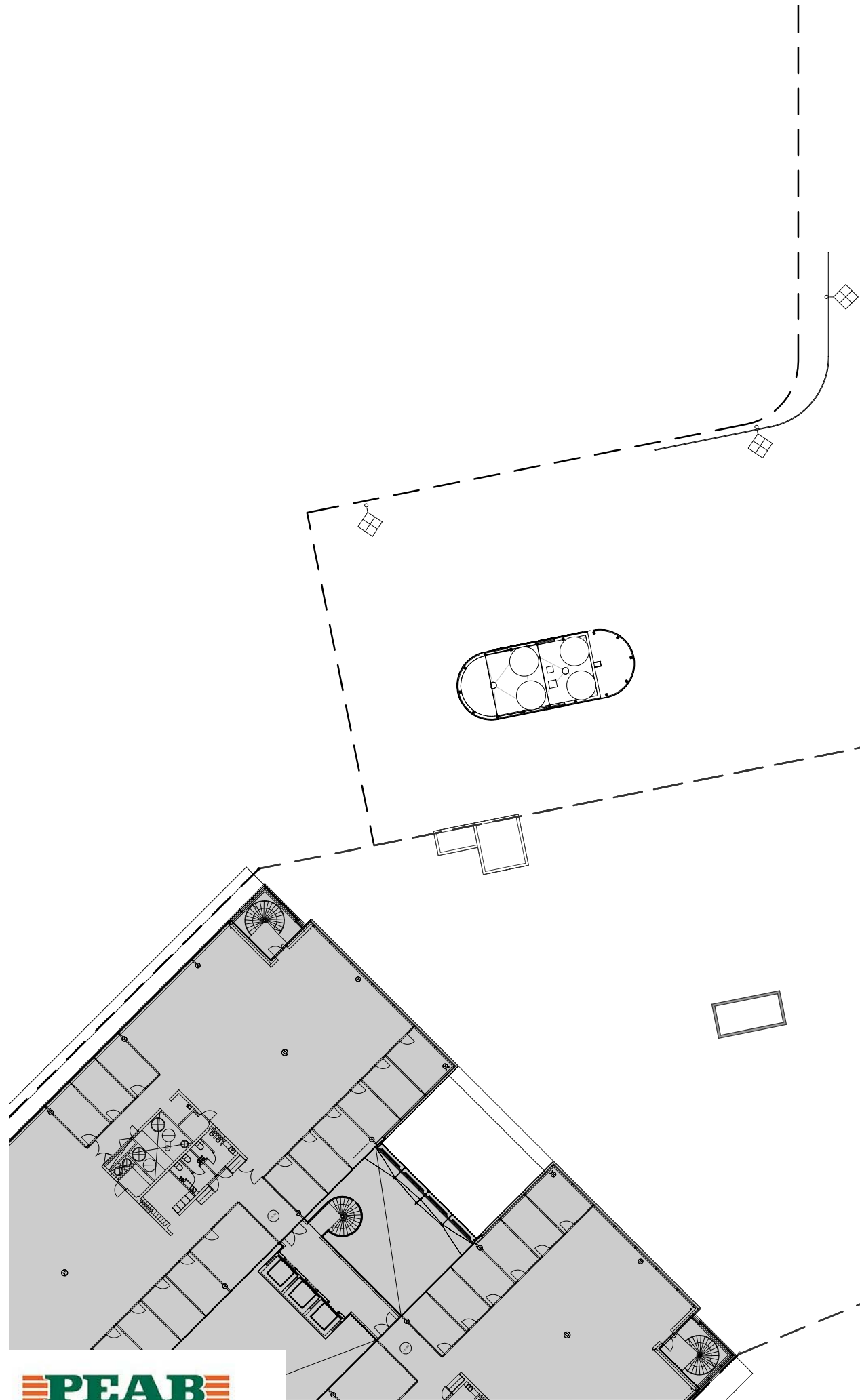


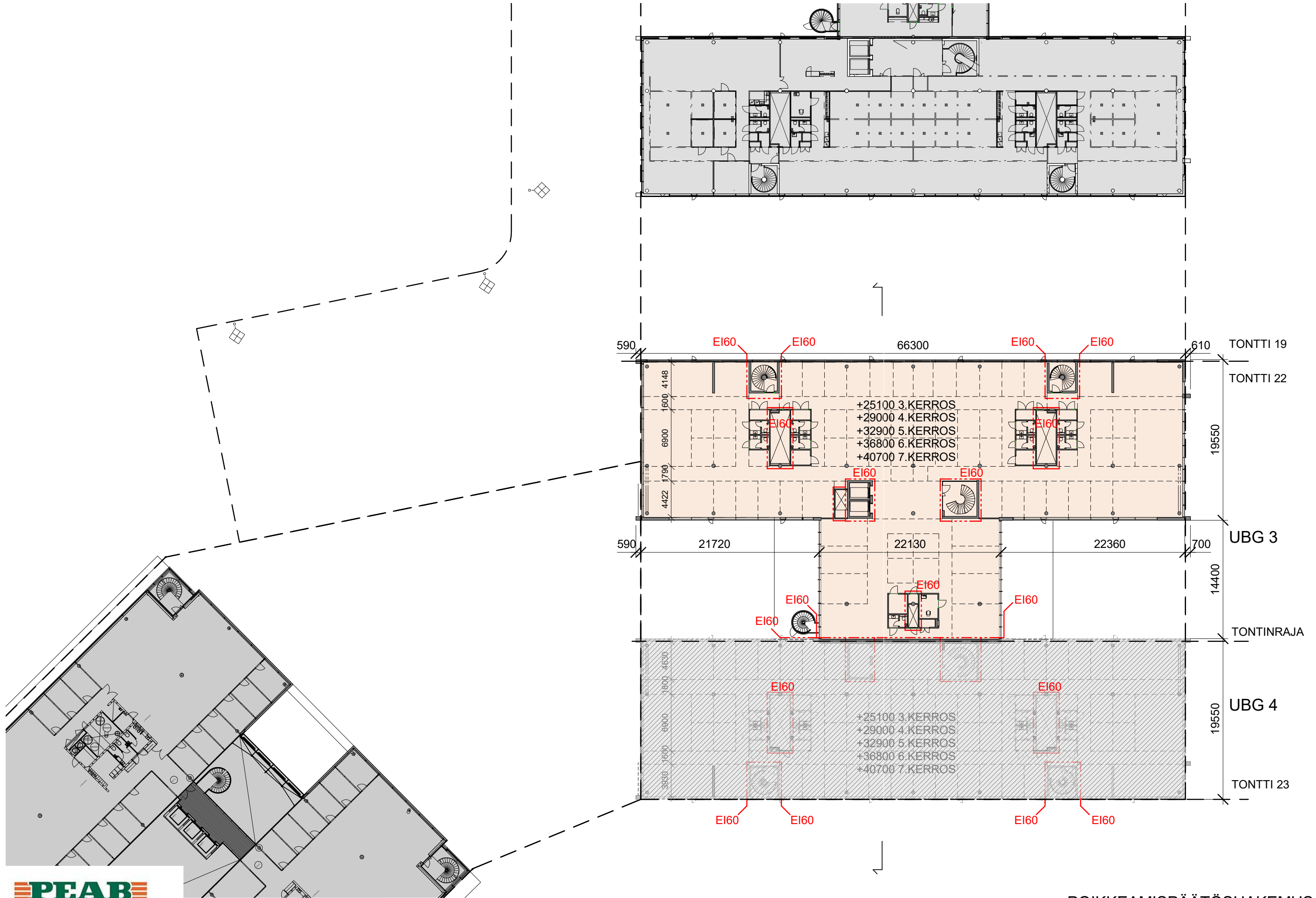


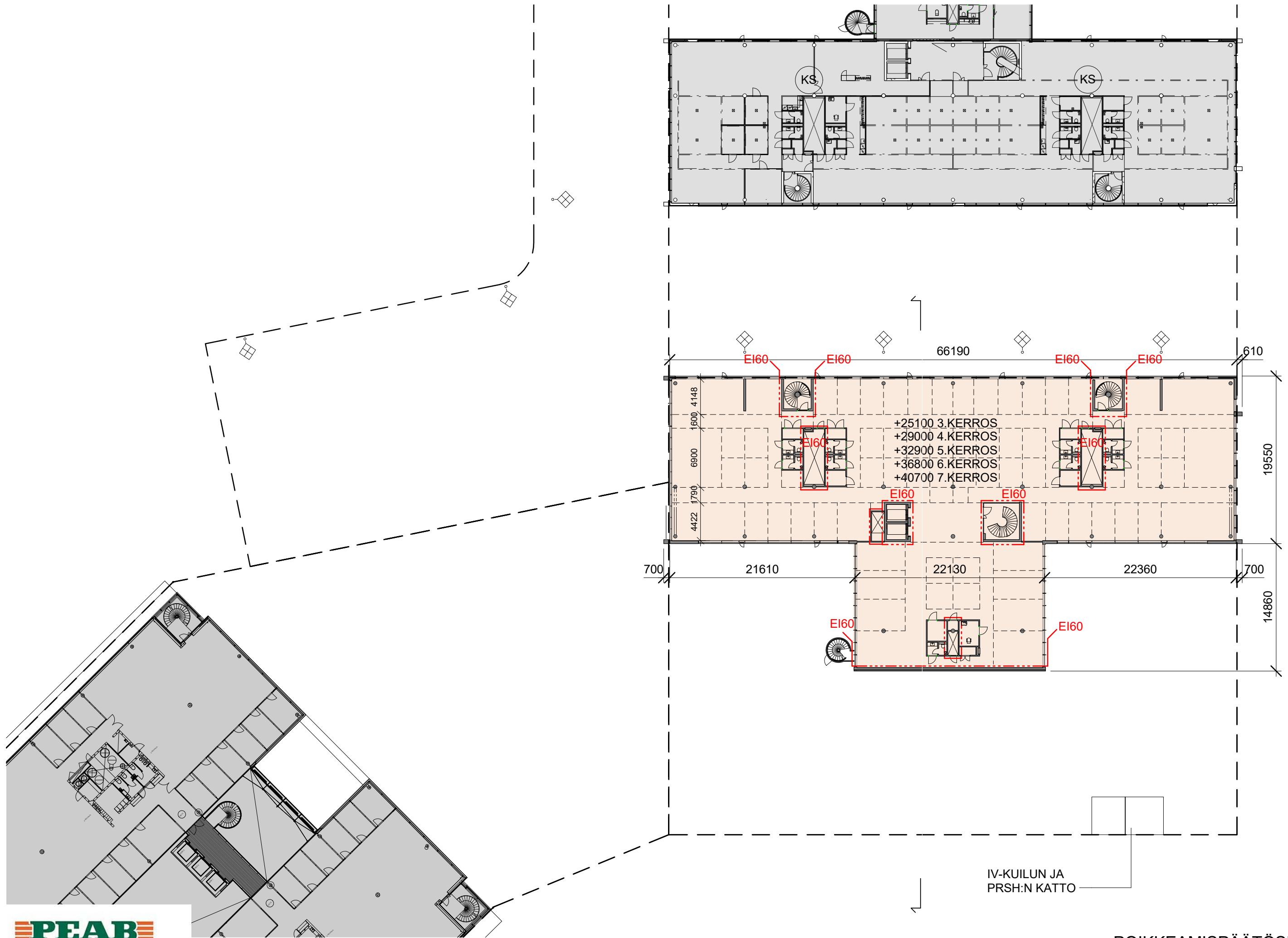


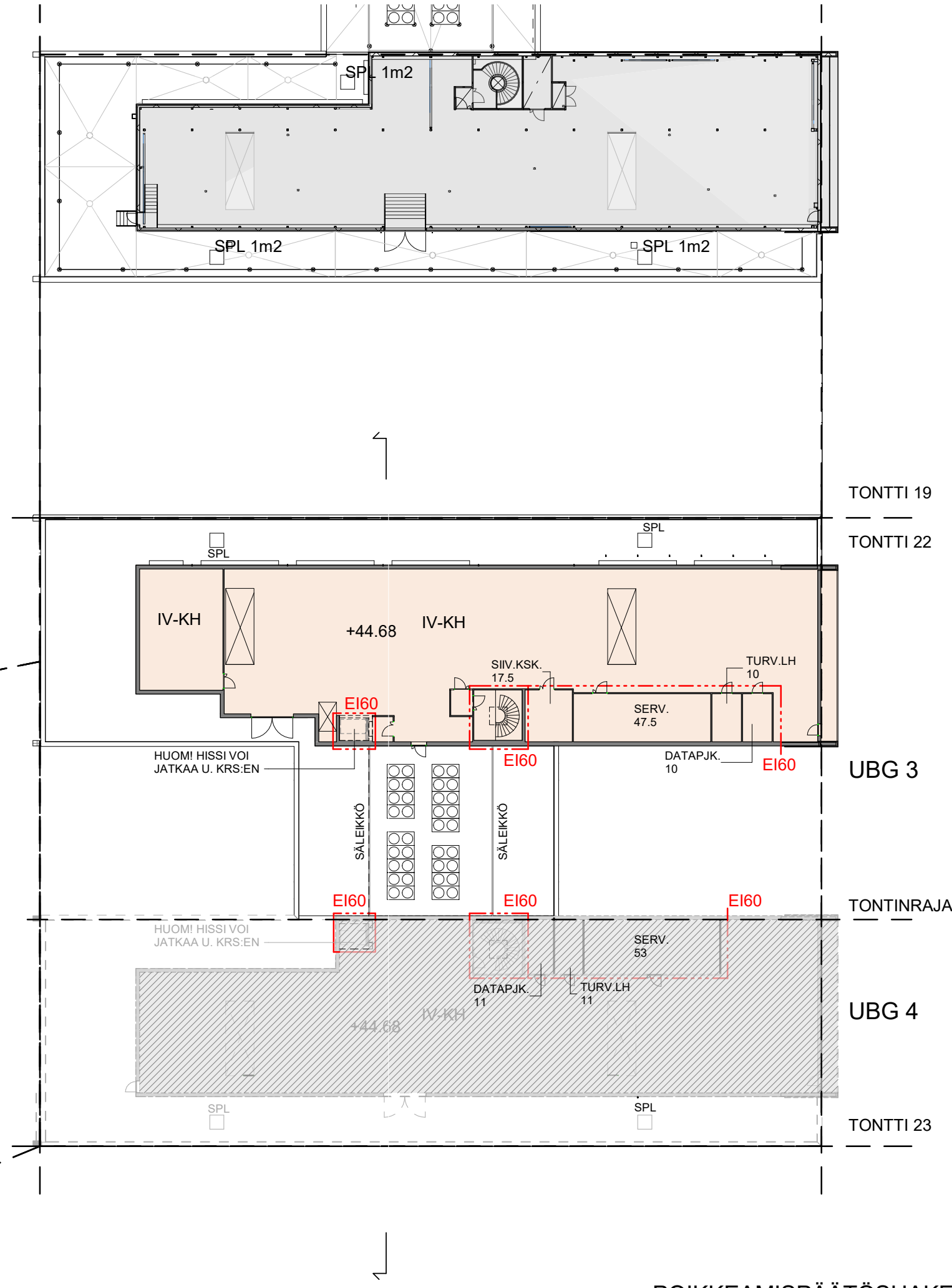
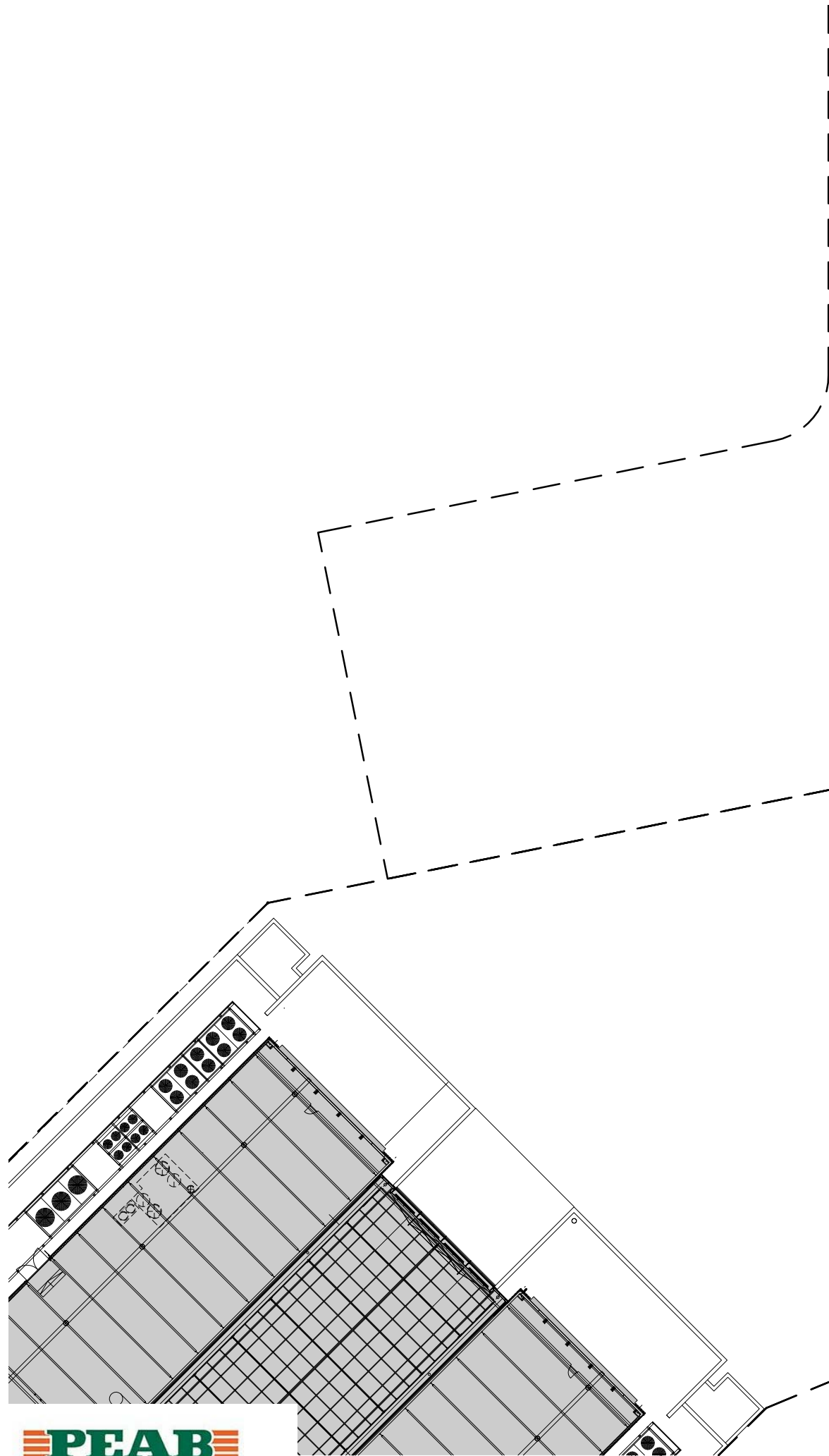












TONTTI 19

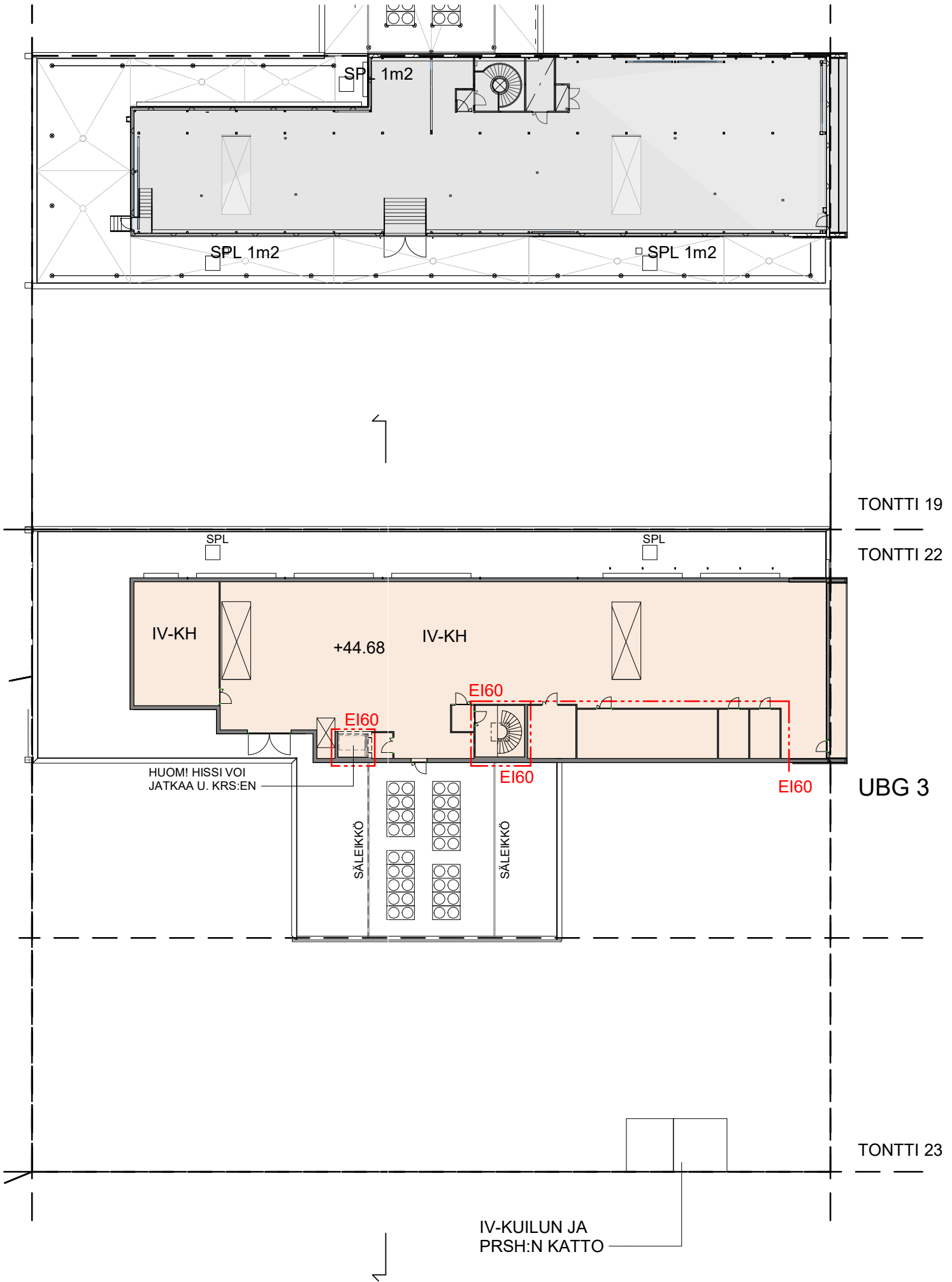
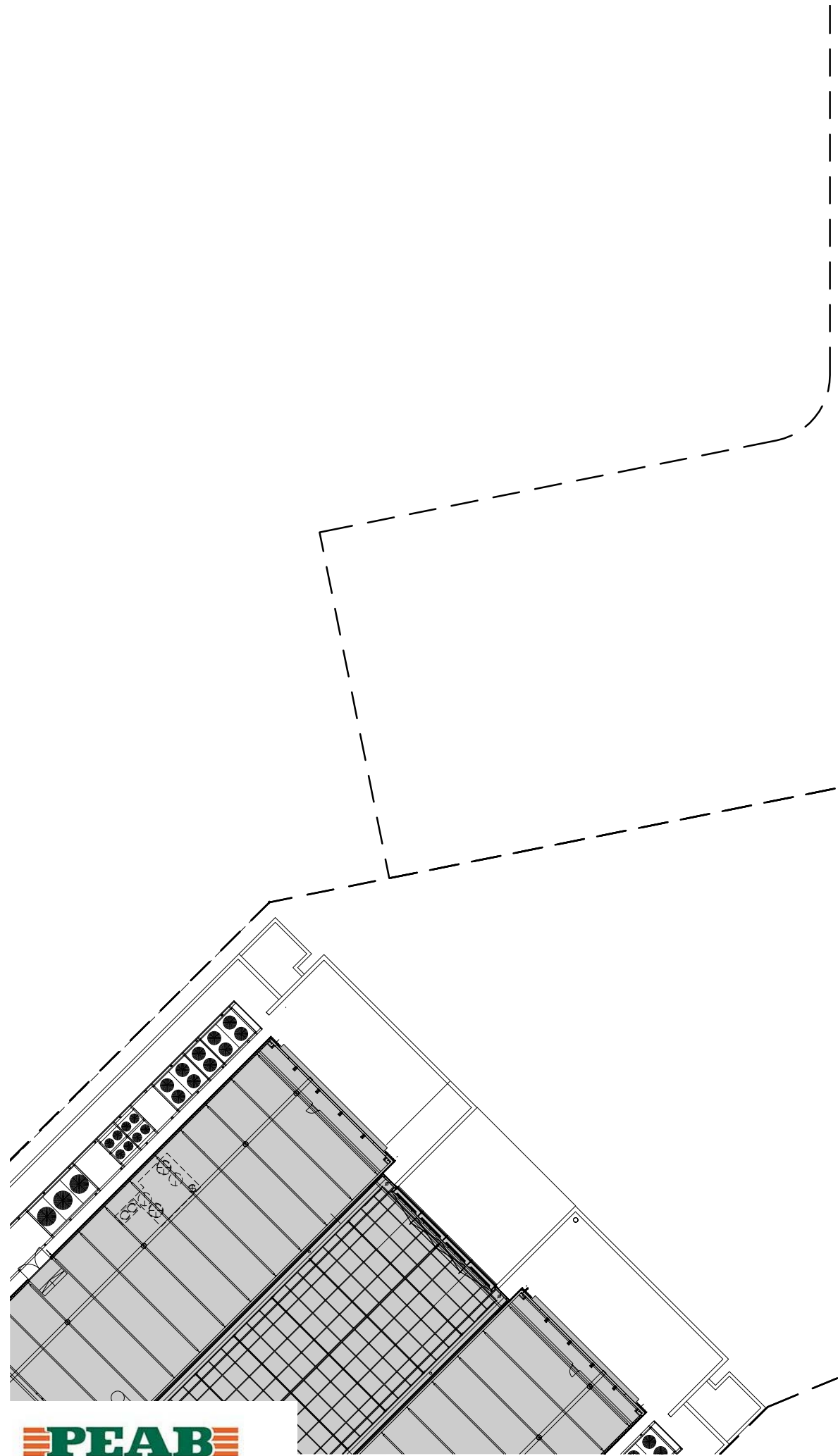
TONTTI 22

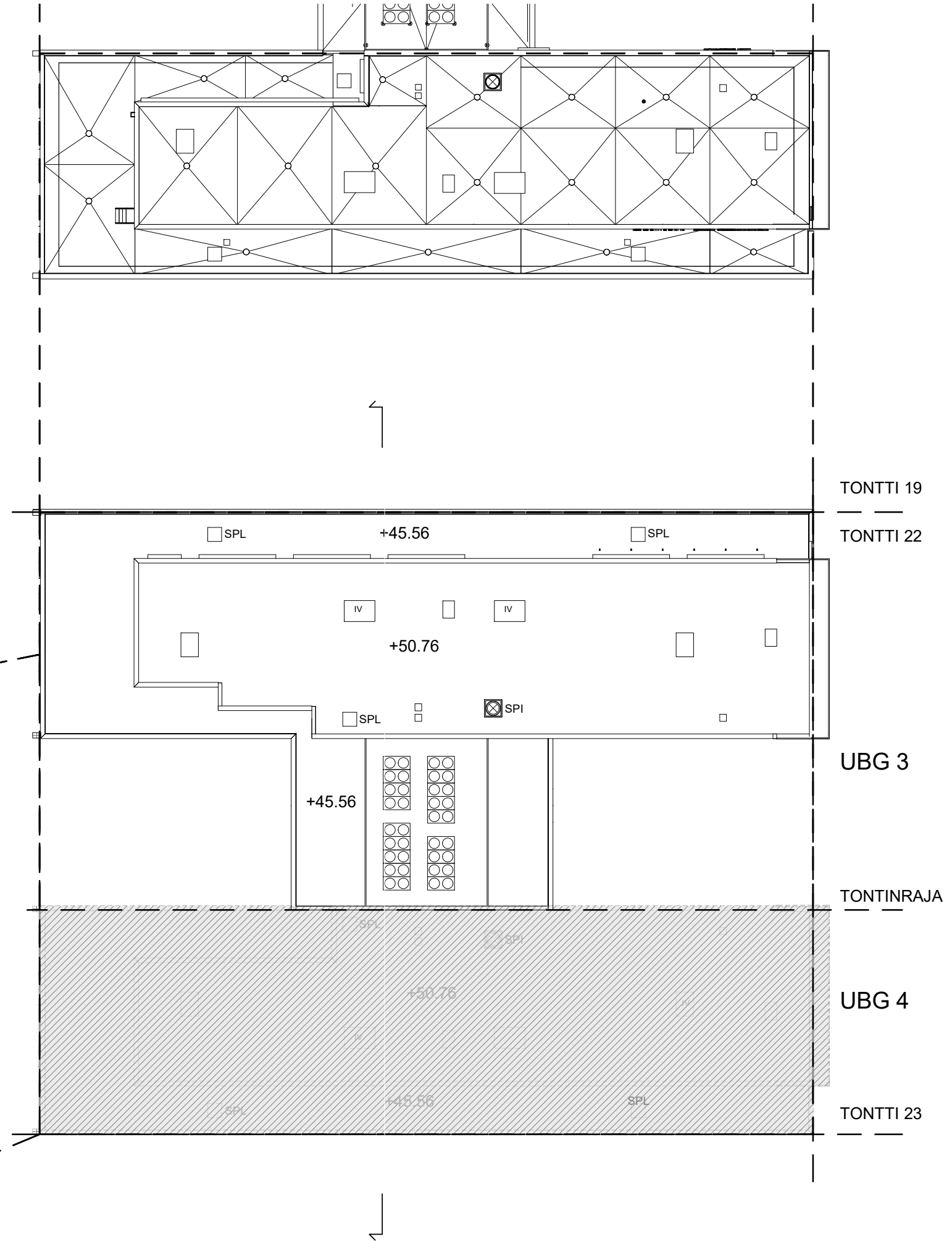
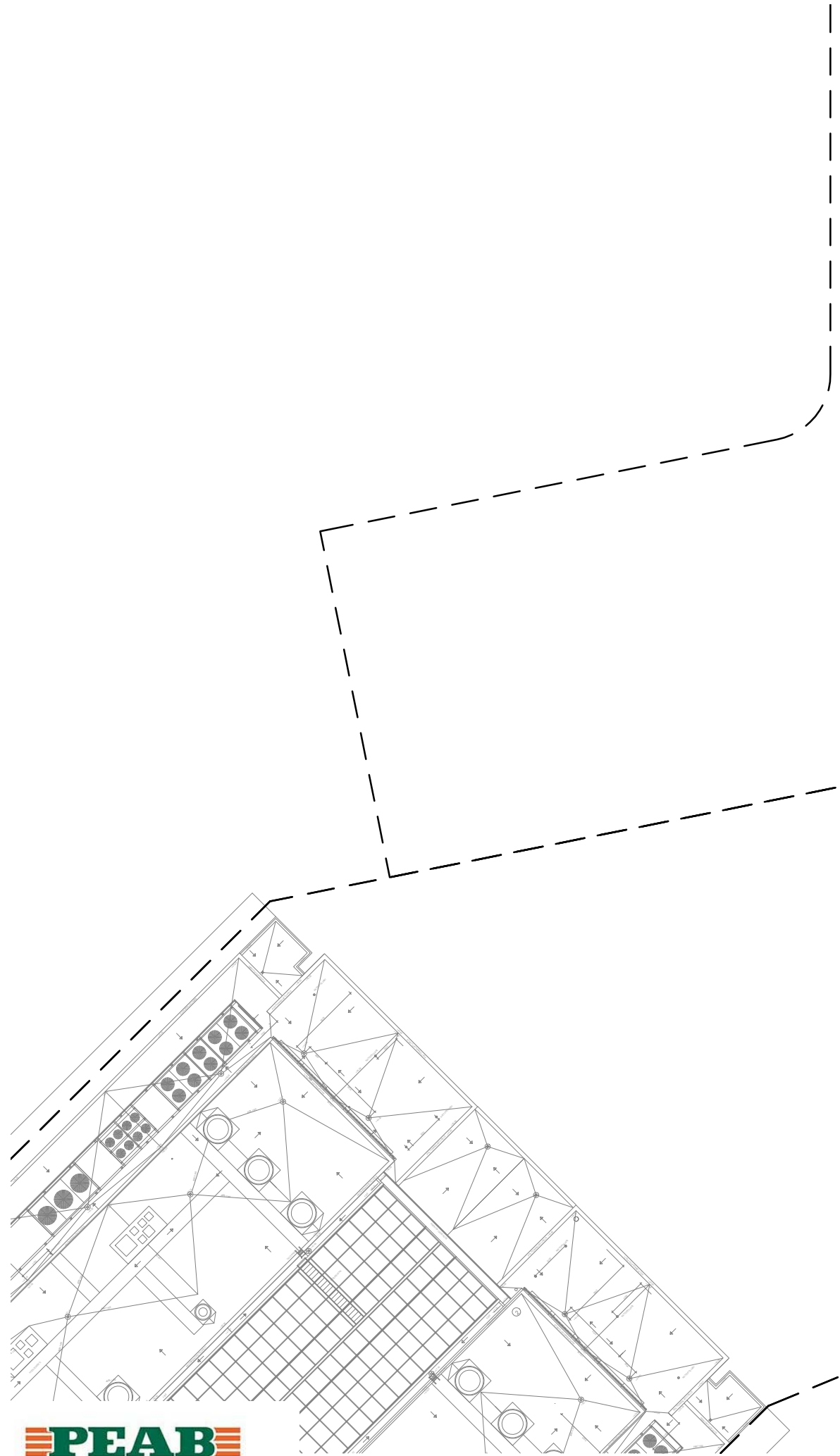
UBG 3

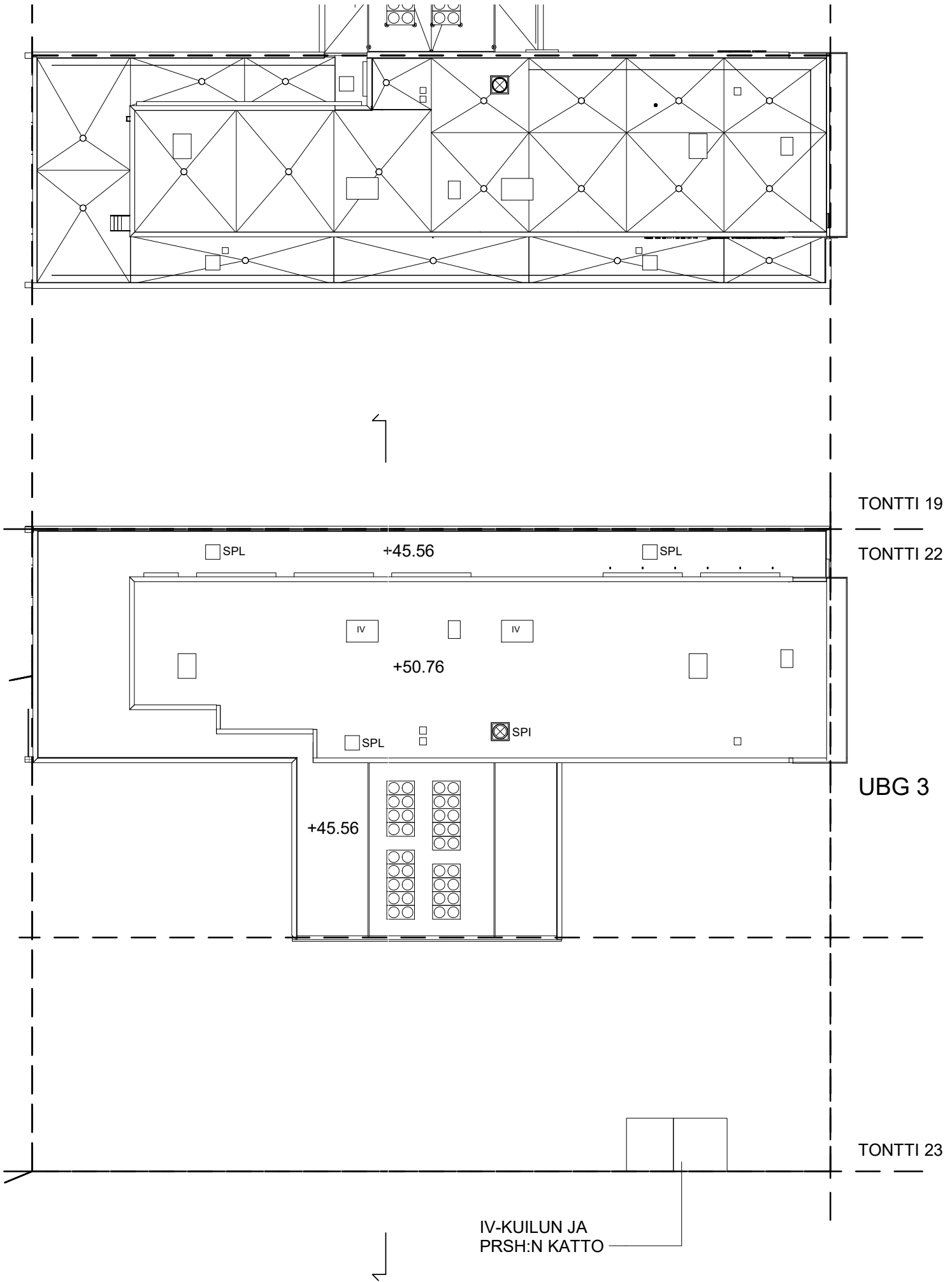
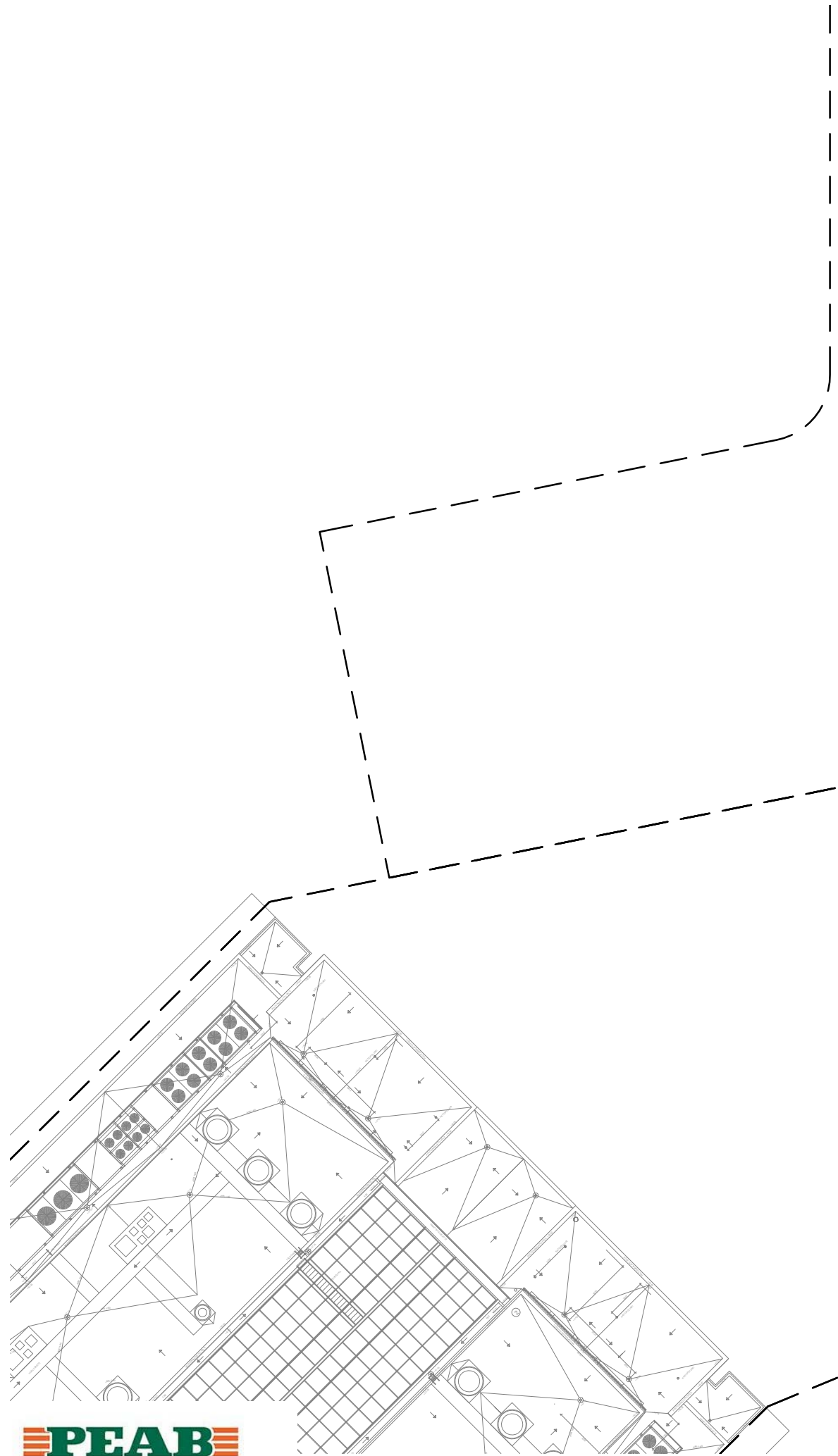
TONTINRAJA

UBG 4

TONTTI 23





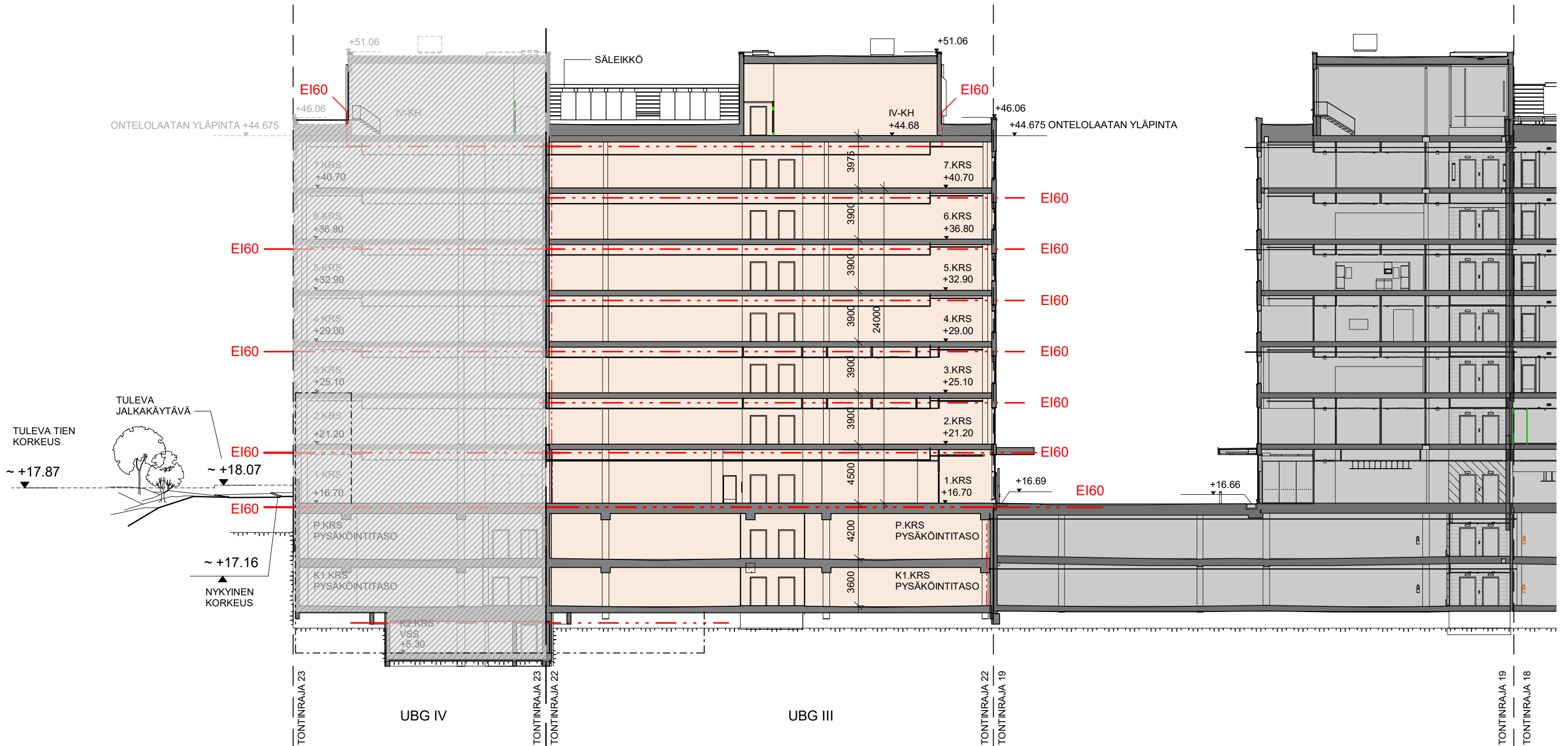


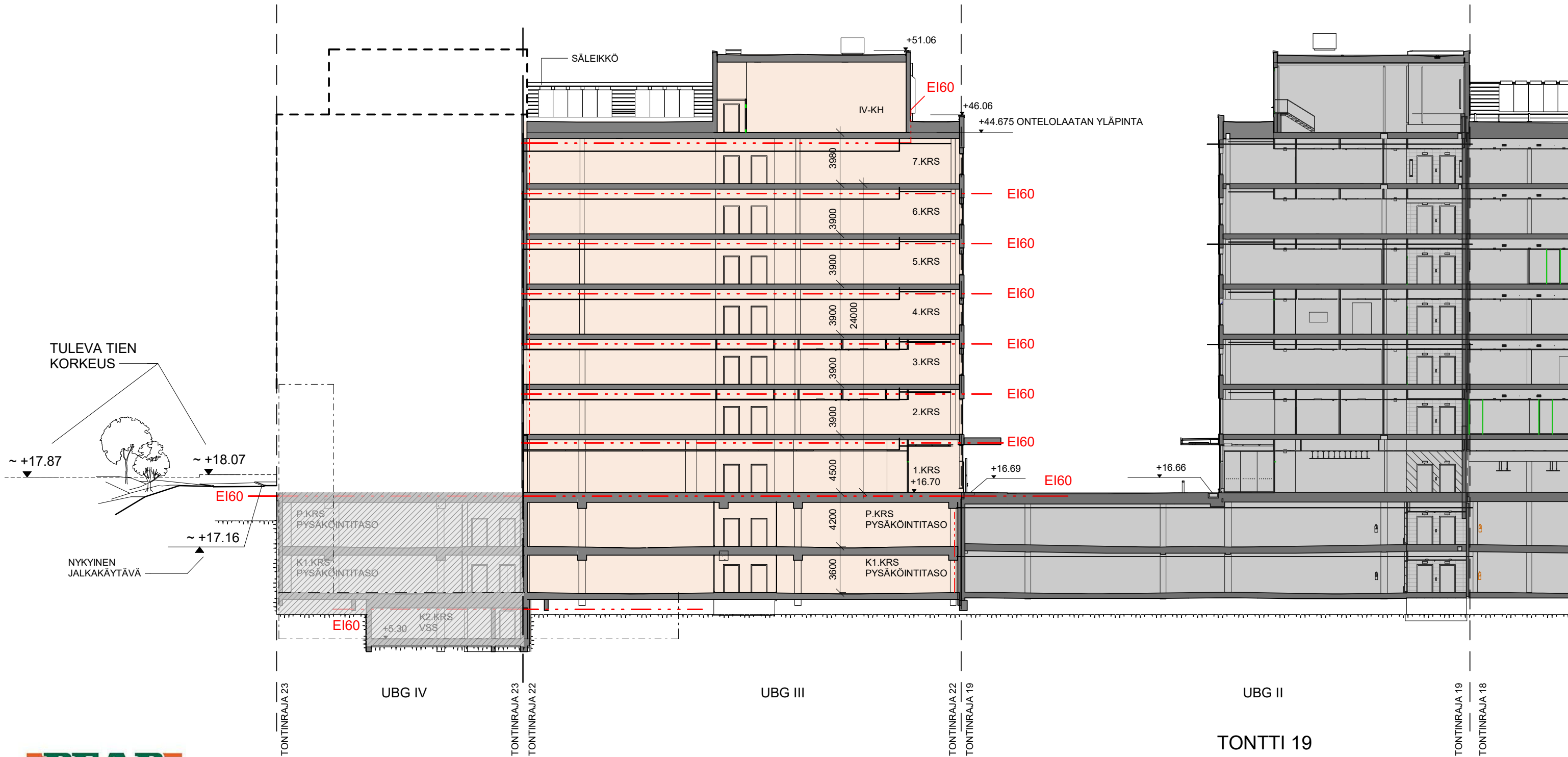
IV-KUILUN JA
PRSH:N KATTO

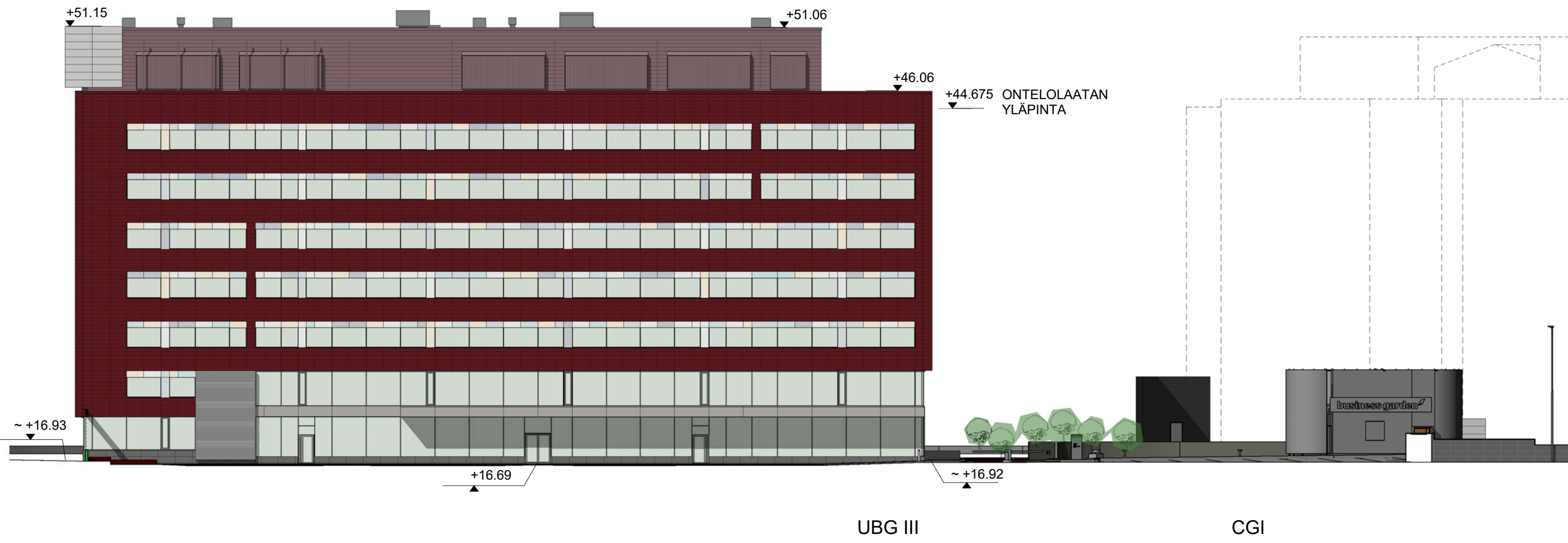
UBG IV

UBG III

UBG II







CGI

UBG IV

UBG III

UBG II

ONTELOLAATAN
YLÄPINTA +44.675

ONTELOLAATAN
YLÄPINTA +44.675

+46.06

+51.14

+46.06

+18.10

~+18.30

TULEVA JALKAKÄYTÄVÄ
KORKEUS

~+15.00 NYKYINEN
KORKEUS

1.KRS LATTIA +16.70

~+16.93

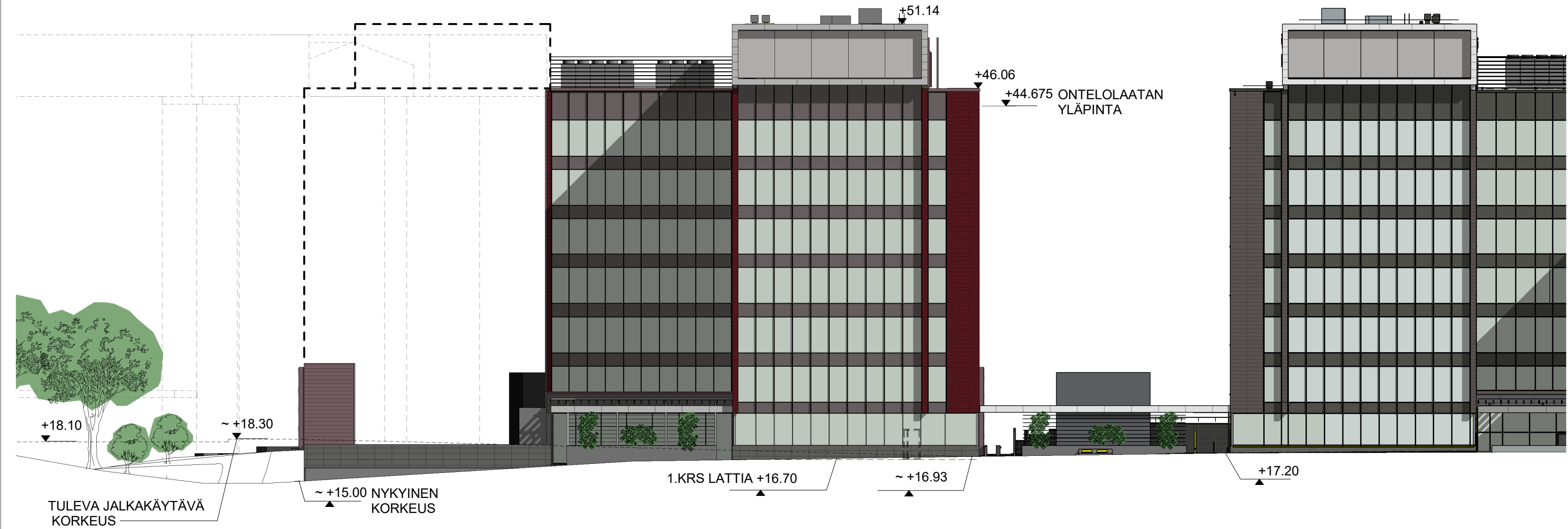
+17.20



CGI

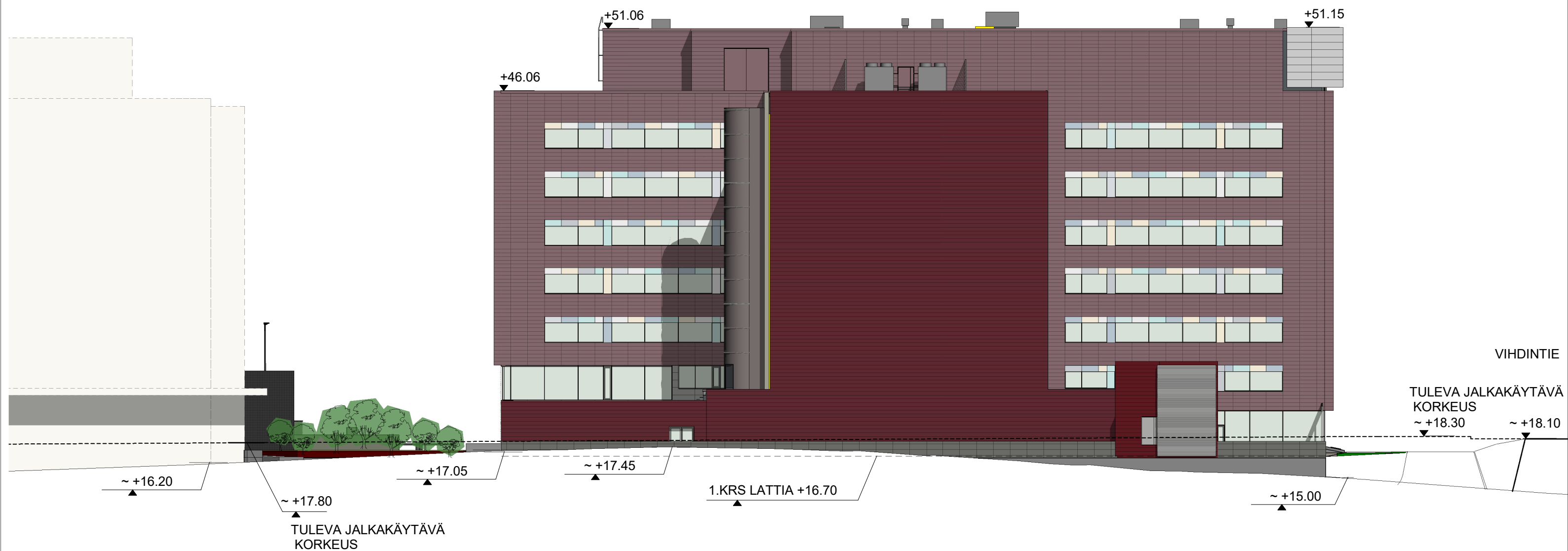
UBG III

UBG II



CGI

UBG III



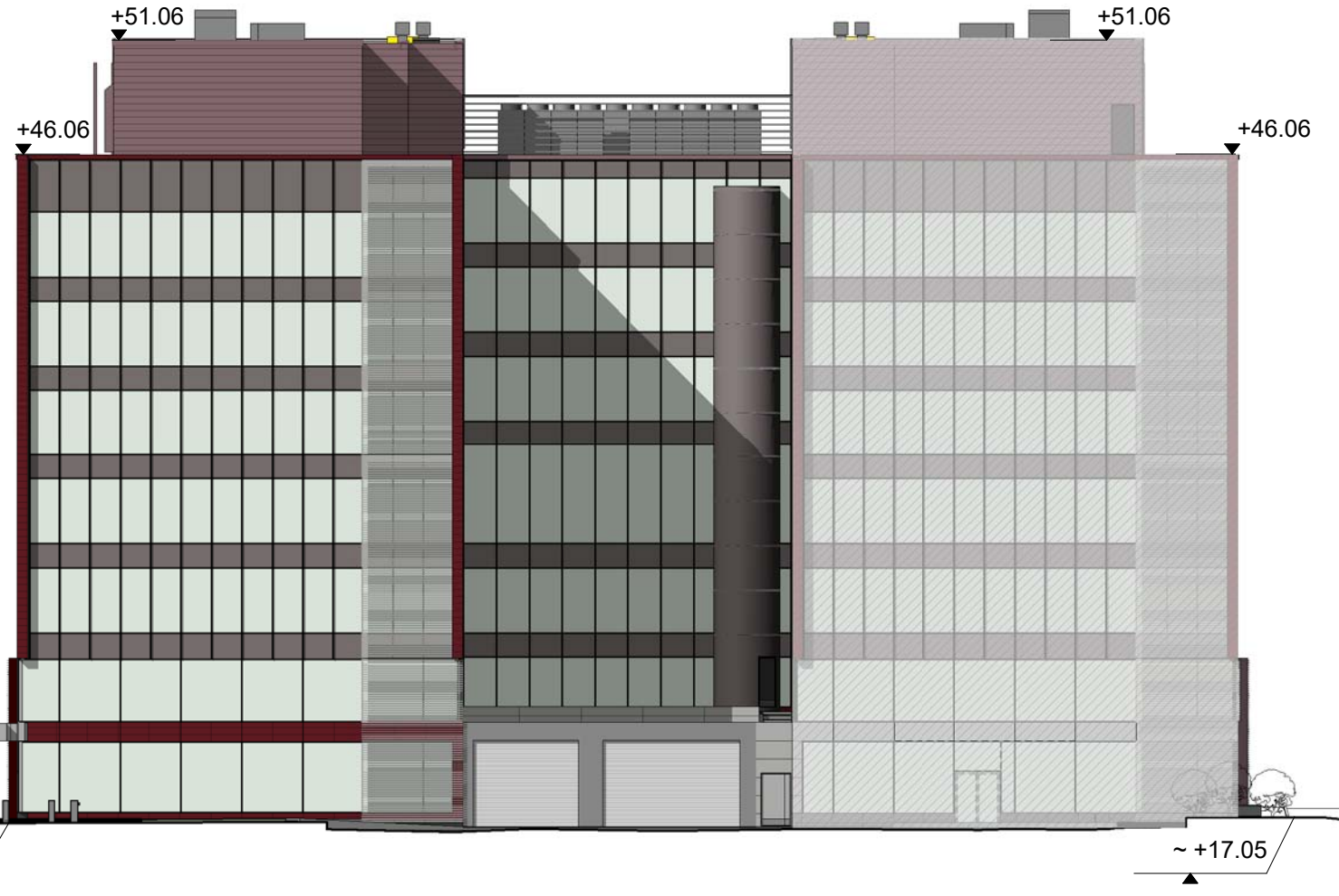
UBG I

UBG II

UBG III

UBG IV

ONTELOLAATAN
YLÄPINTA +44.675



UBG I

UBG II

UBG III

ONTELOLAATAN +44.675
YLÄPINTA

+51.06

+46.06

TULEVA JALKAKÄYTTÄVÄ

+17.90

~ +16.92

~ +17.05